



# **Map Guide**

**(Macintosh & Windows)**

Copyright 2003, I. L. Holdridge. [Document Date: 30 December 2003 : 1700]

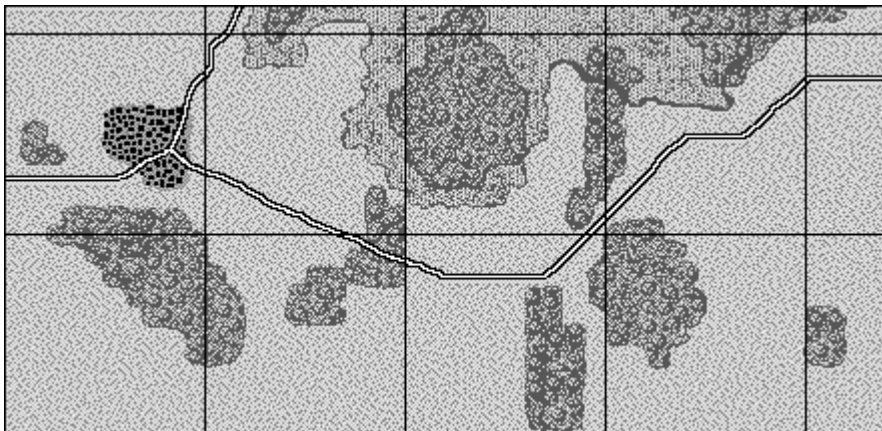
## Map001

Wooded.



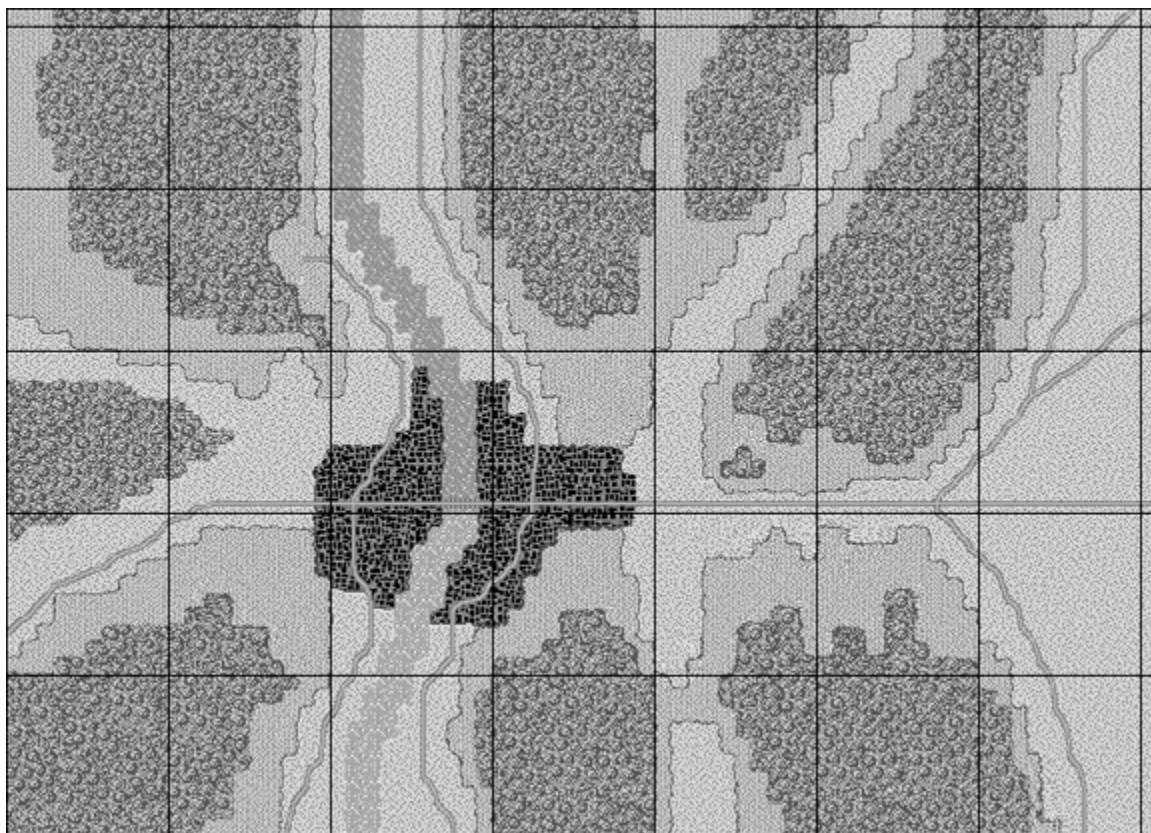
## Map002

Wooded.



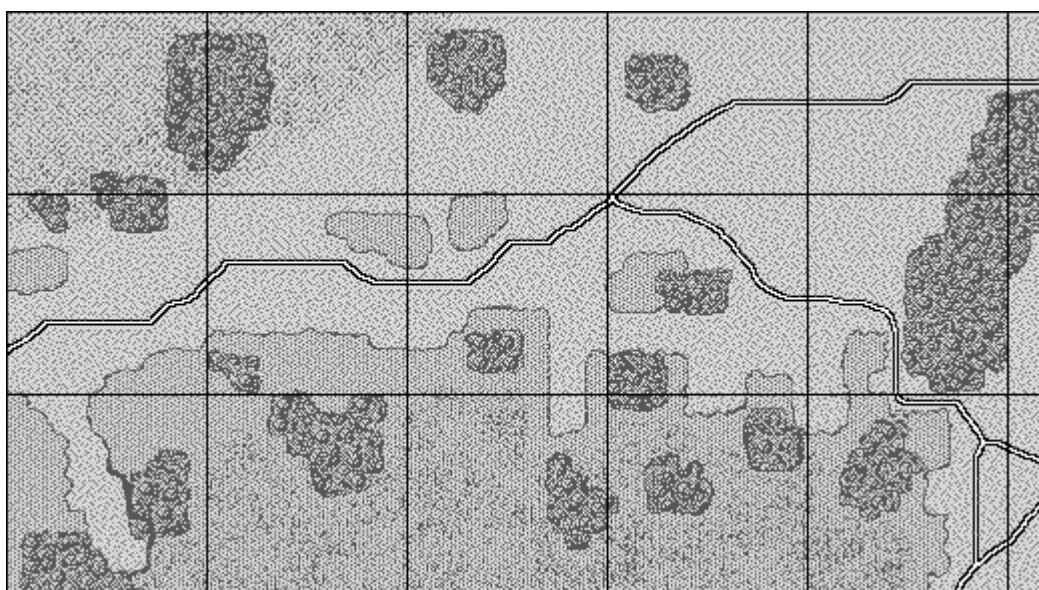
### Map003

Woods, town, and river.



### Map004

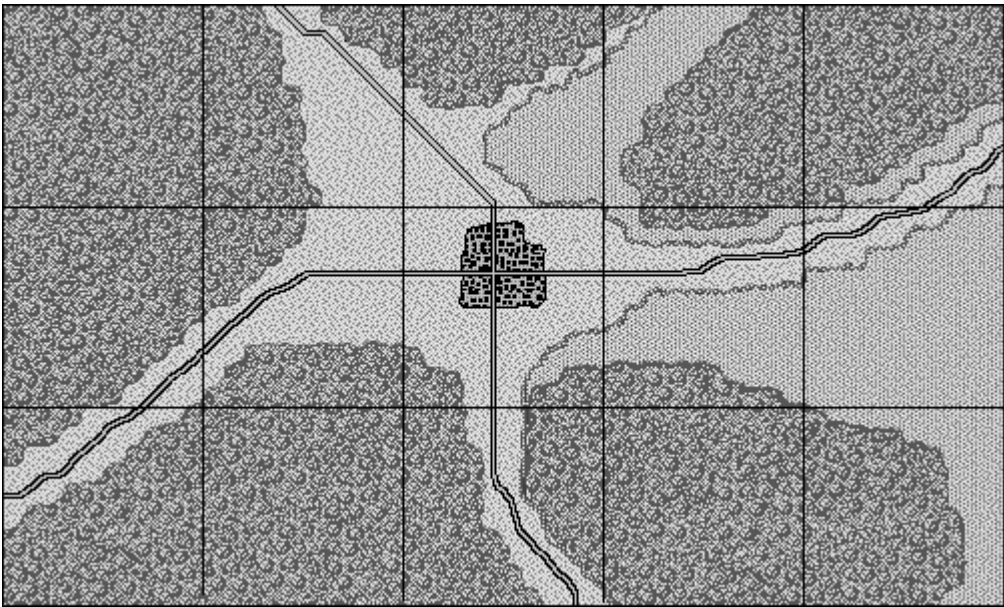
Wooded.





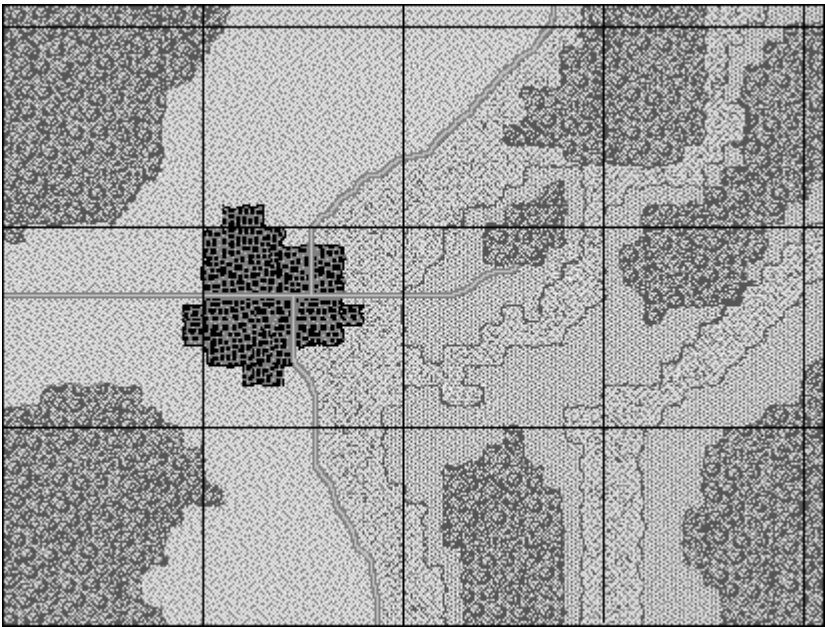
**Map005**

Wooded.



**Map006**

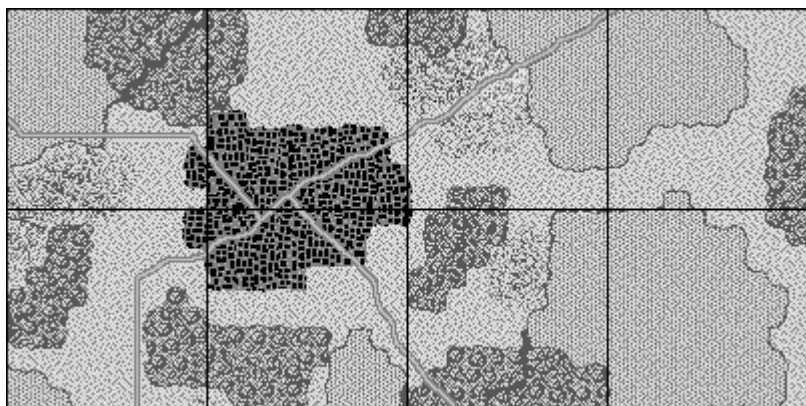
Wooded.





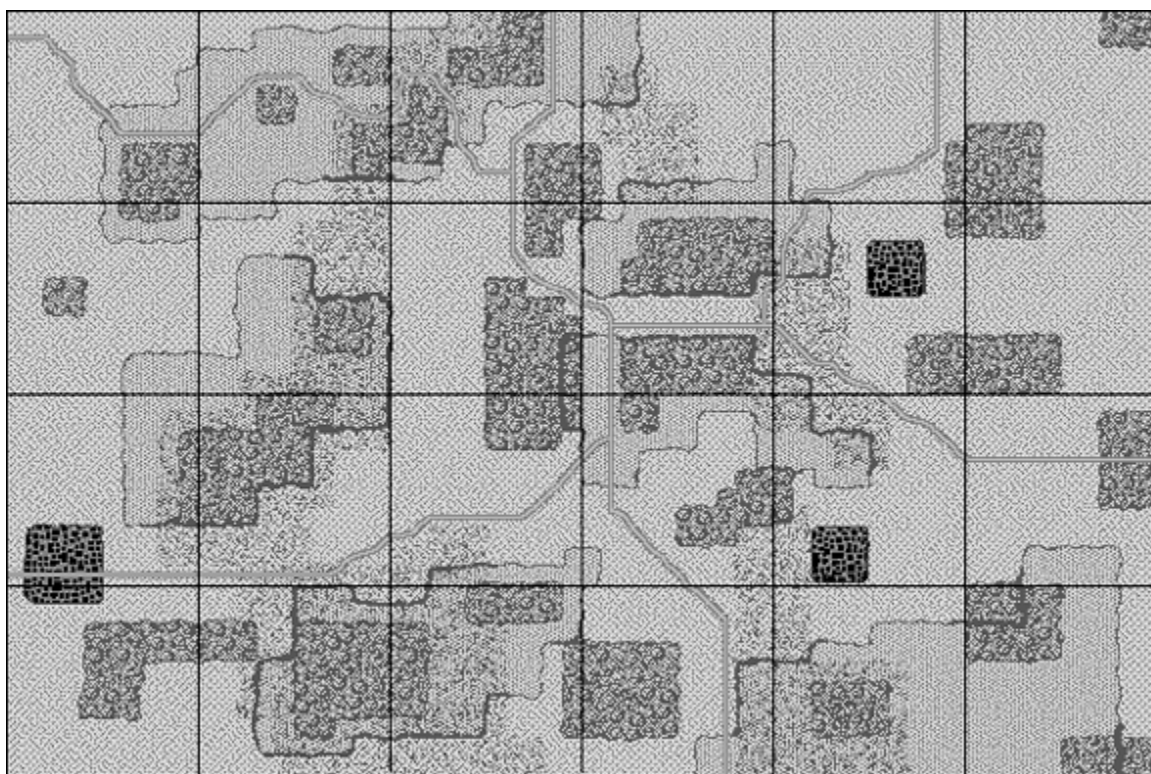
## Map007

Wooded.



## Map008

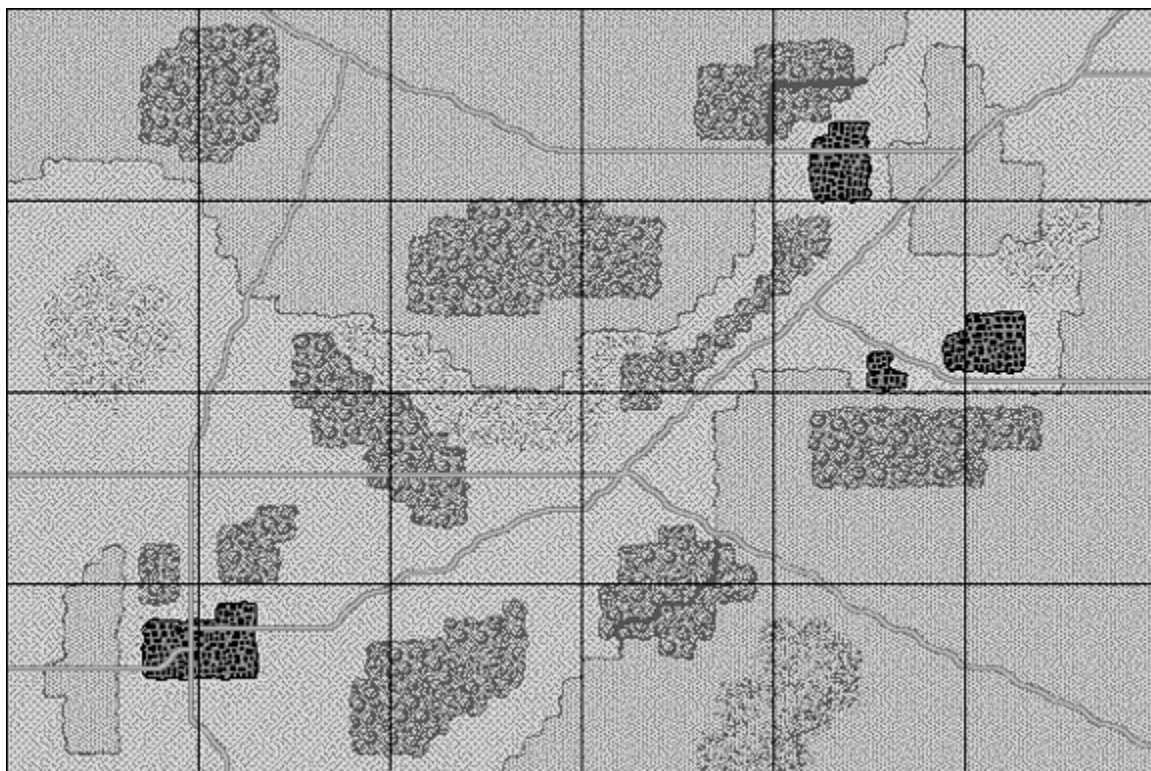
Wooded.





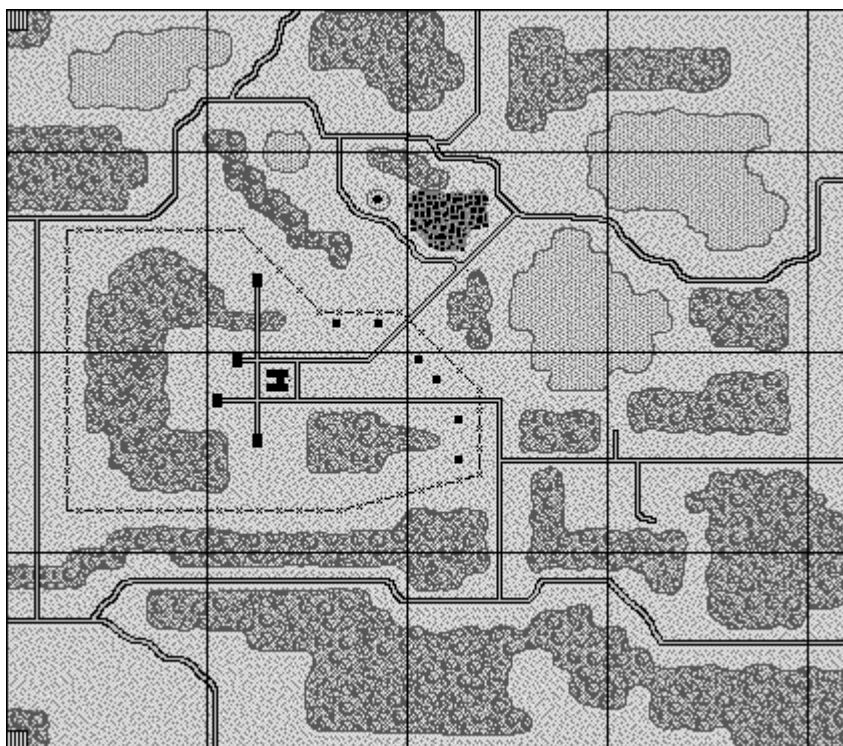
## Map009

Wooded.



## Map010

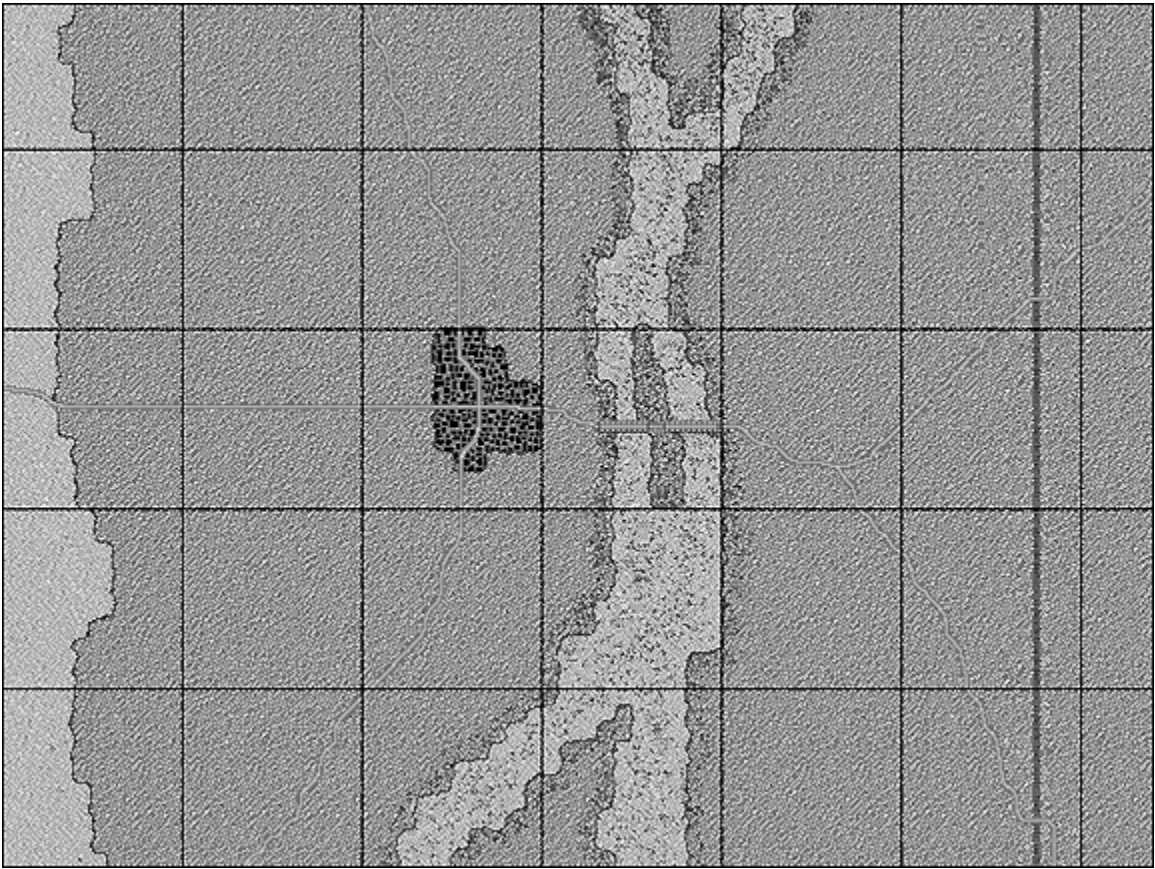
Wooded.





**Map011 (Desert)**

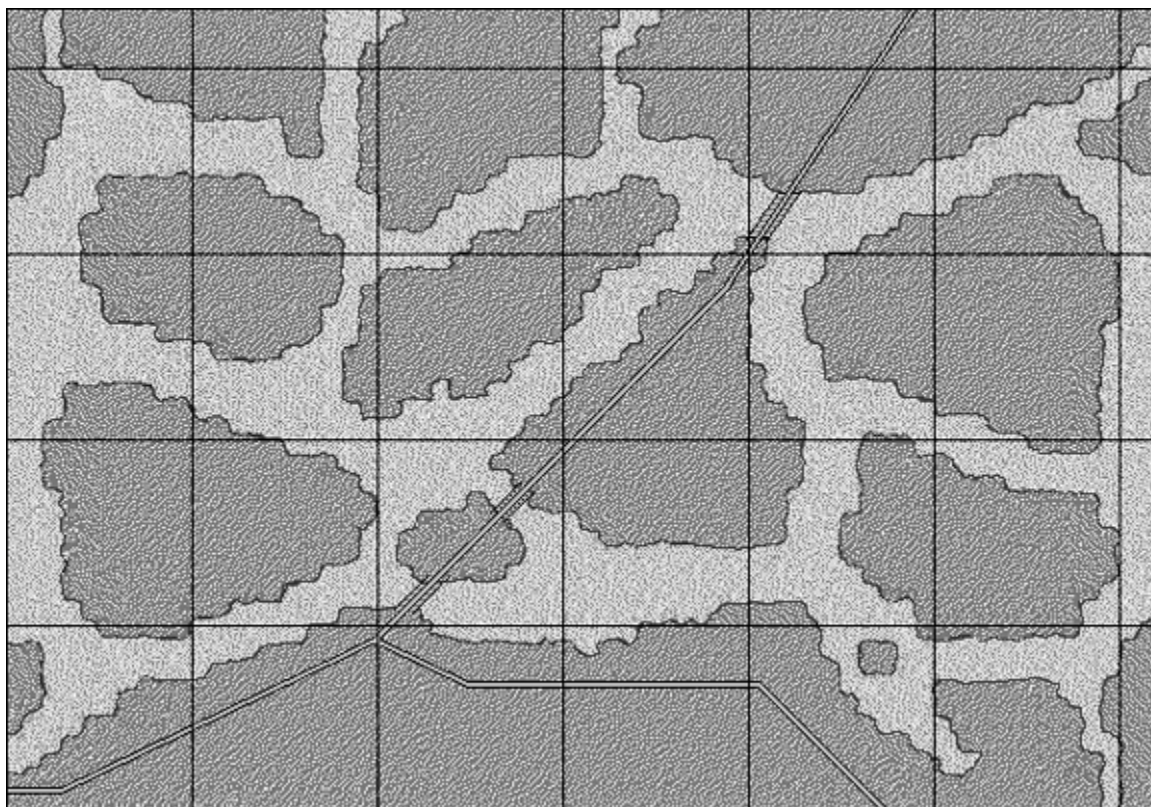
Desert.





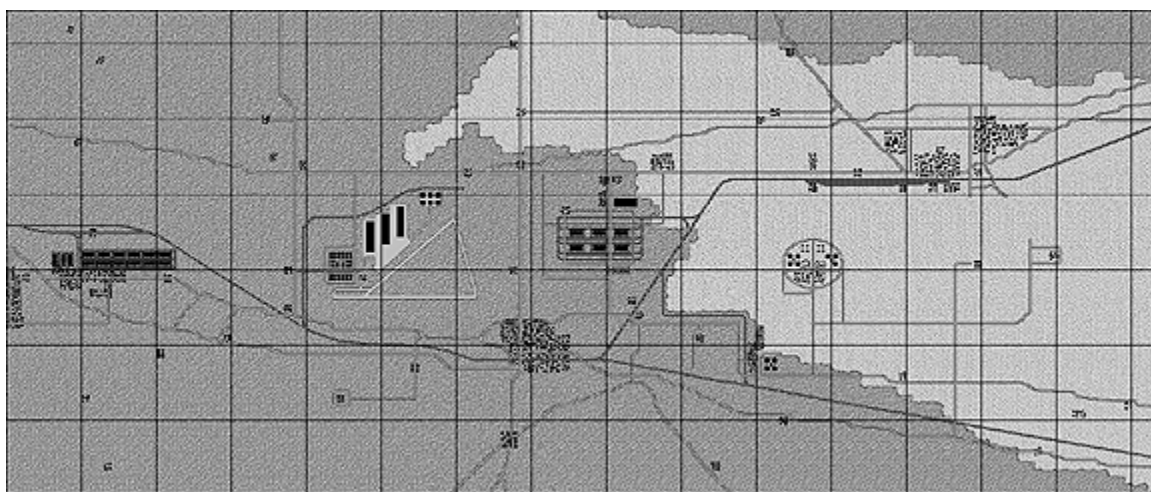
## Map012 (Desert)

Desert.



## Map014 (Desert)

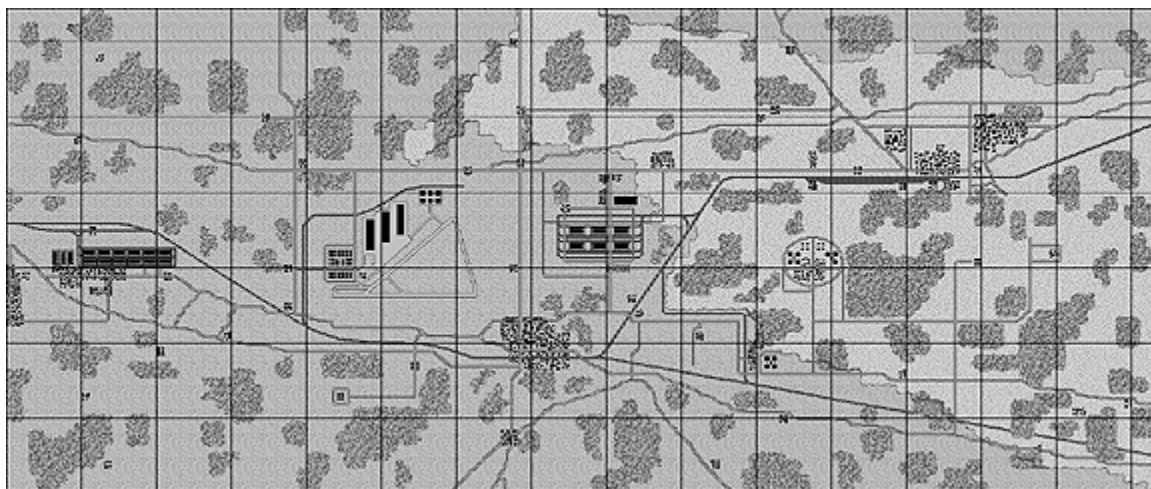
Desert.





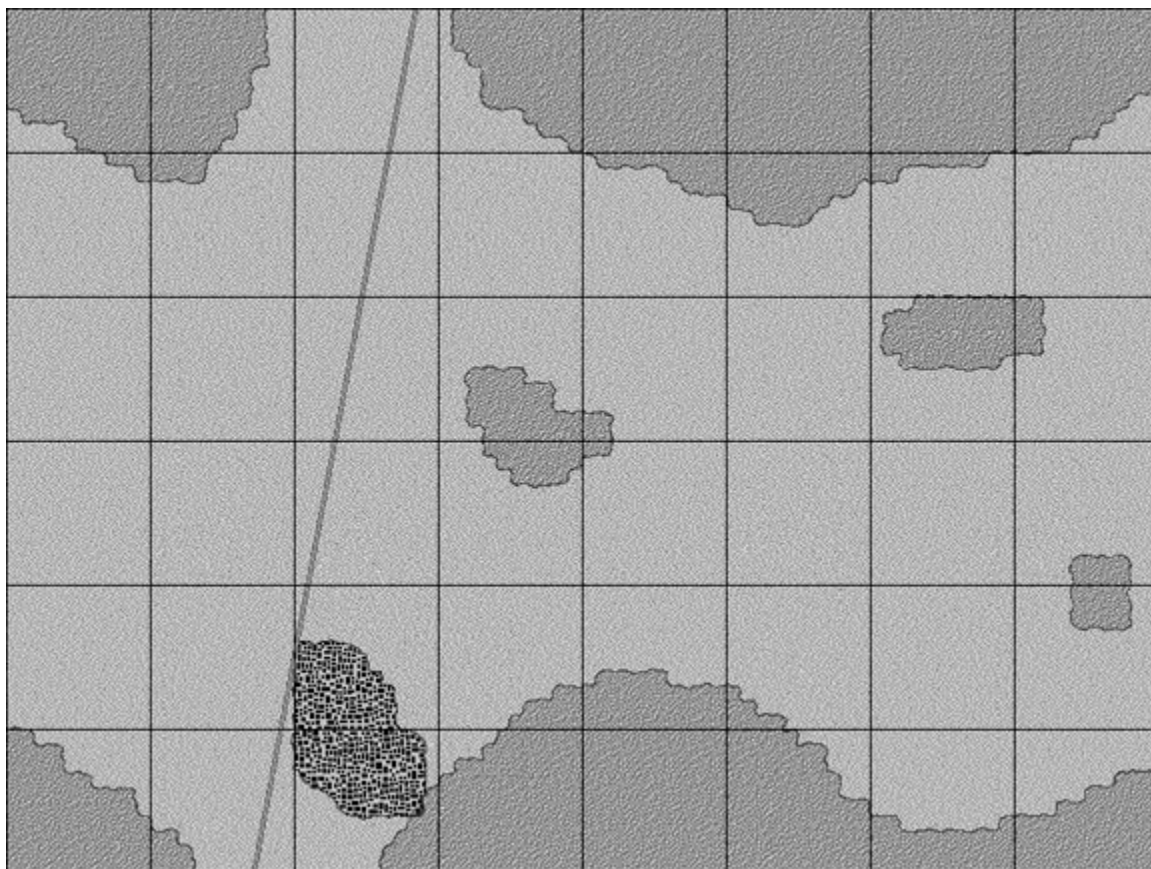
## Map015

Wooded version of Map014.



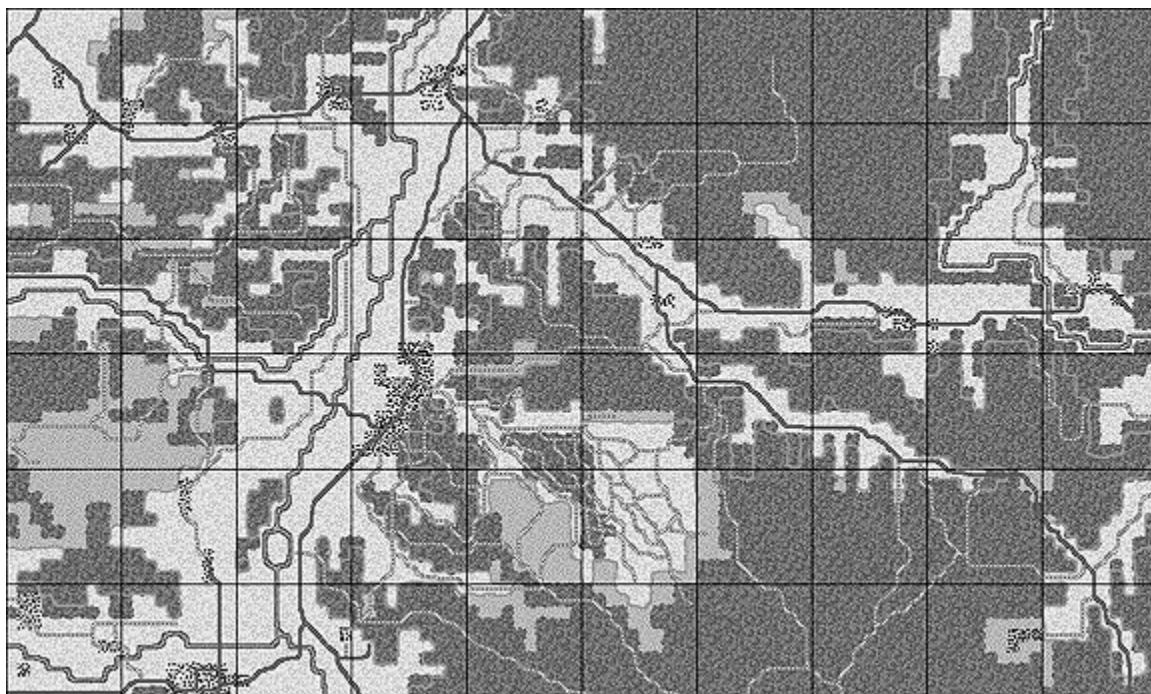
## Map016 (Desert)

Desert.



## Map100 (South Korea)

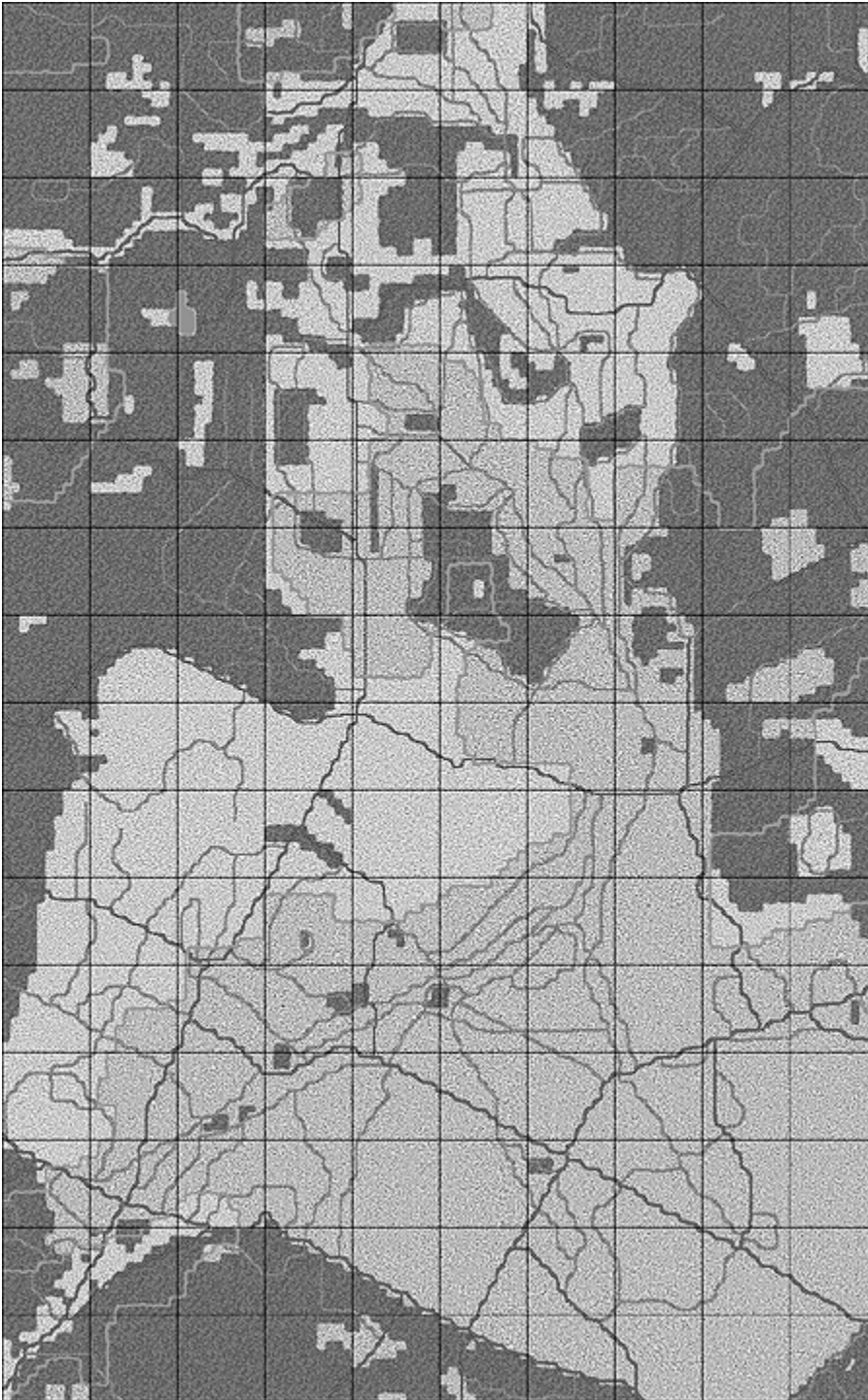
Low fidelity map of Greek Valley training area in South Korea.





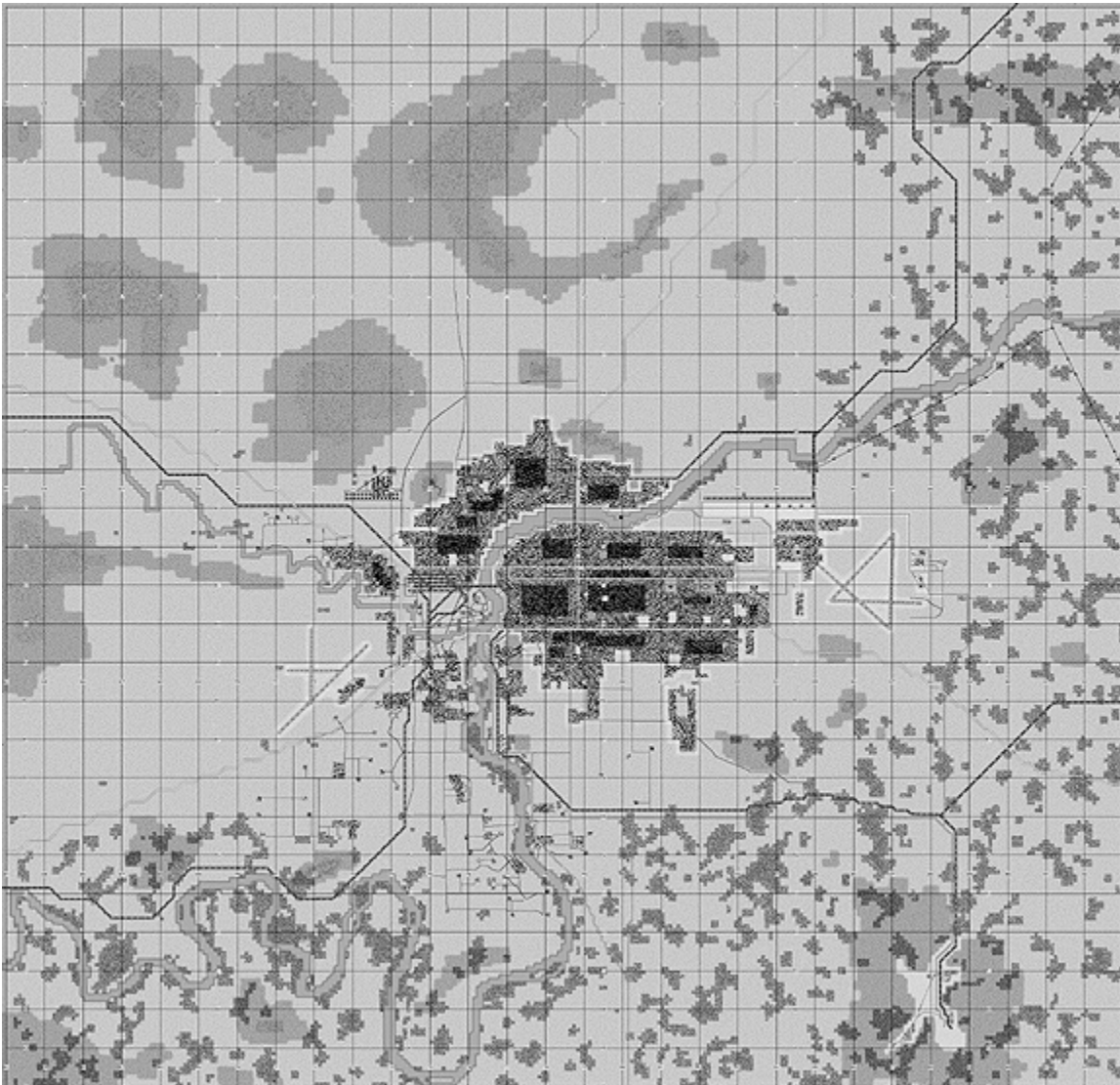
## Map200 (Gagetown)

Low fidelity map of Gagetown training area in Canada.



## Map202 (Great Falls)

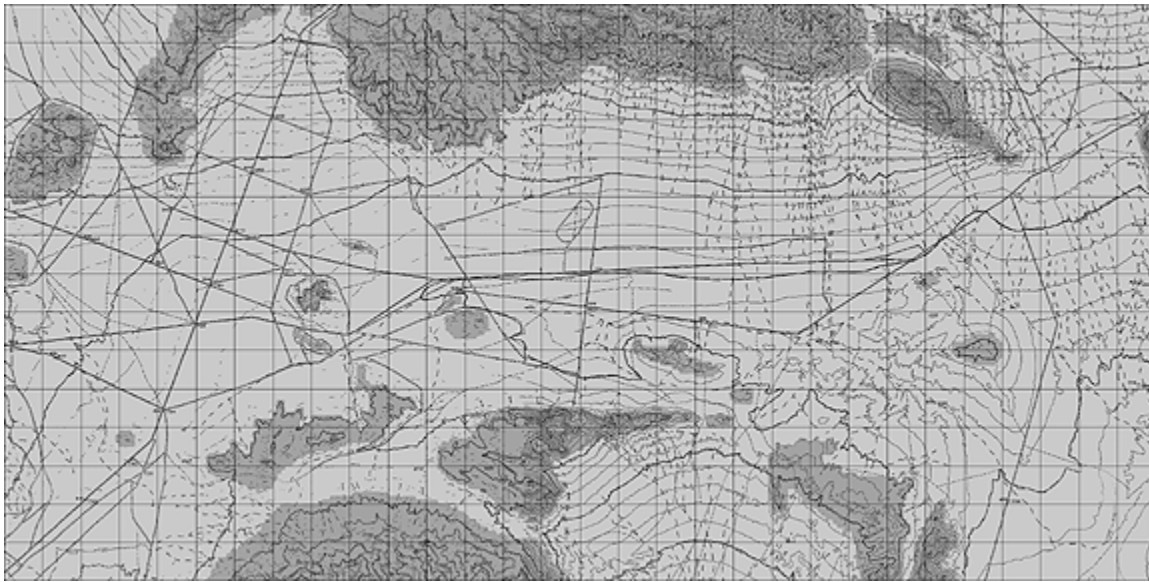
Low fidelity map with a slight resemblance to Great Falls, Montana. 29 km by 28 km. Grid 6476 to 9348.





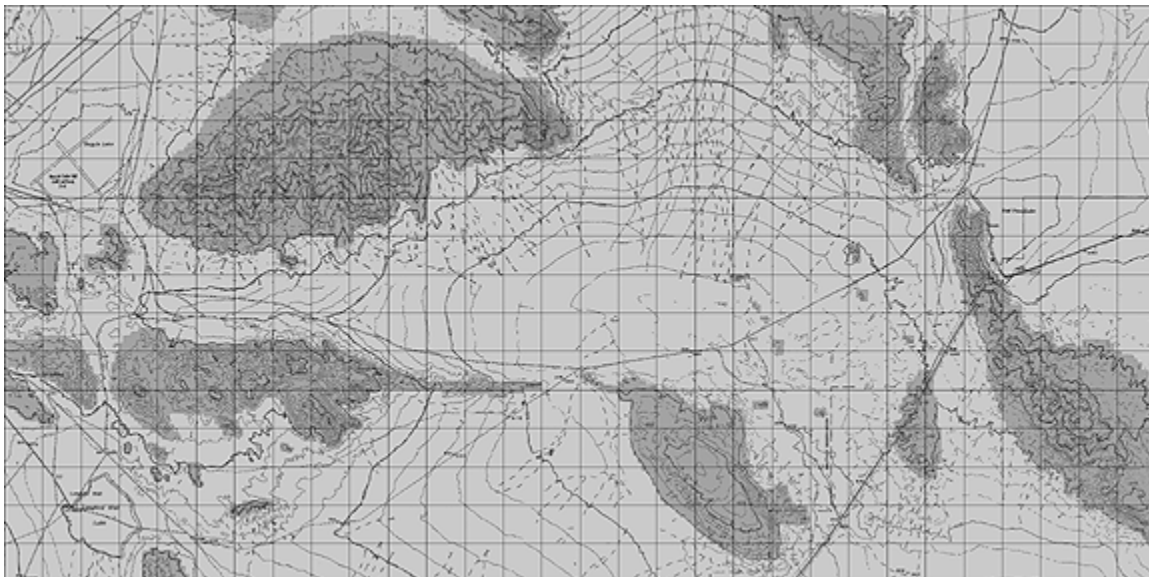
### Map211 (Fort Irwin)

Low fidelity map of NTC Fort Irwin. Grid 3220 to 6205. Topo map scan background.



### Map213 (Fort Irwin)

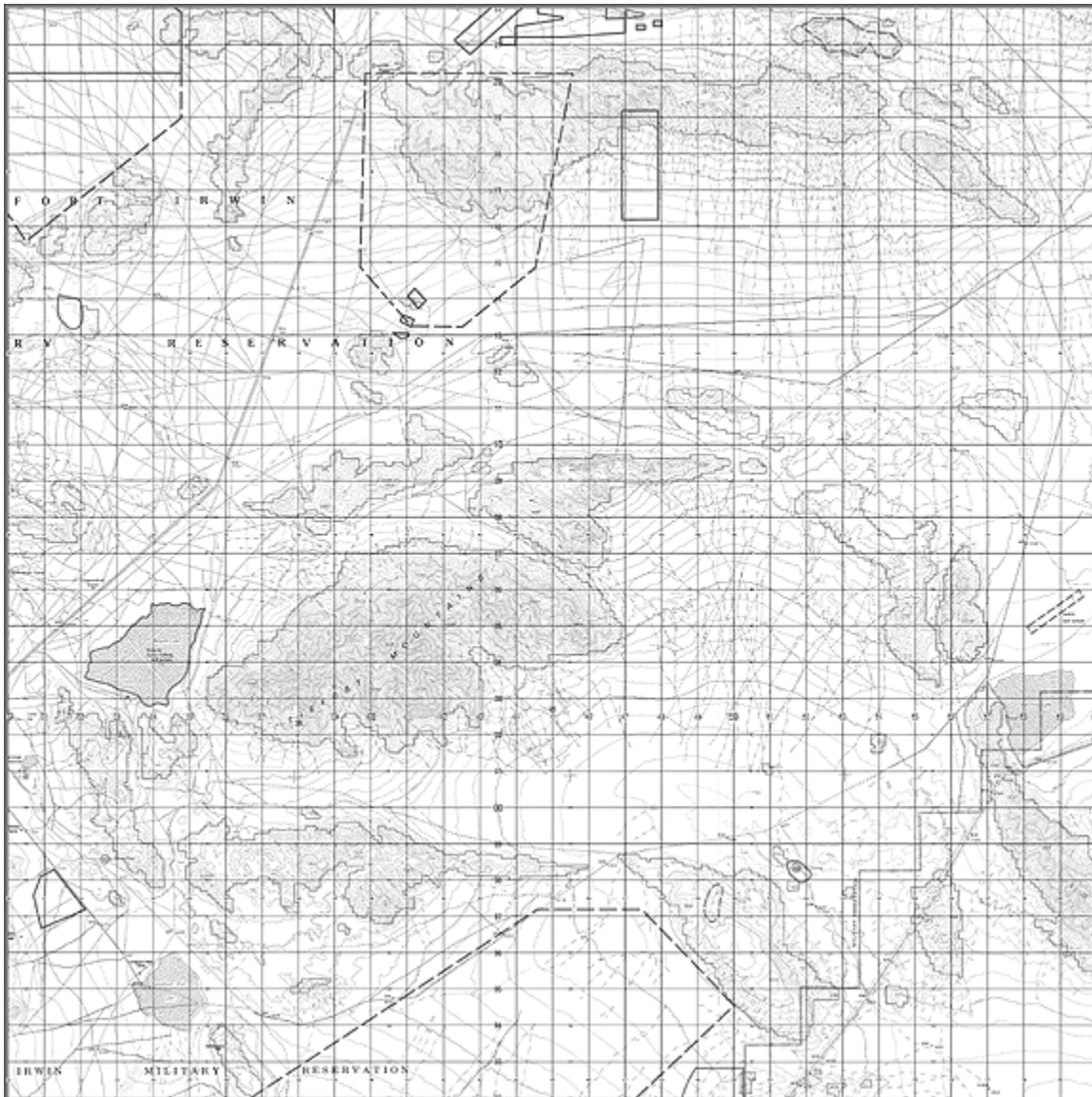
Low fidelity map of NTC Fort Irwin. Grid 3208 to 6293. Topo map scan background.





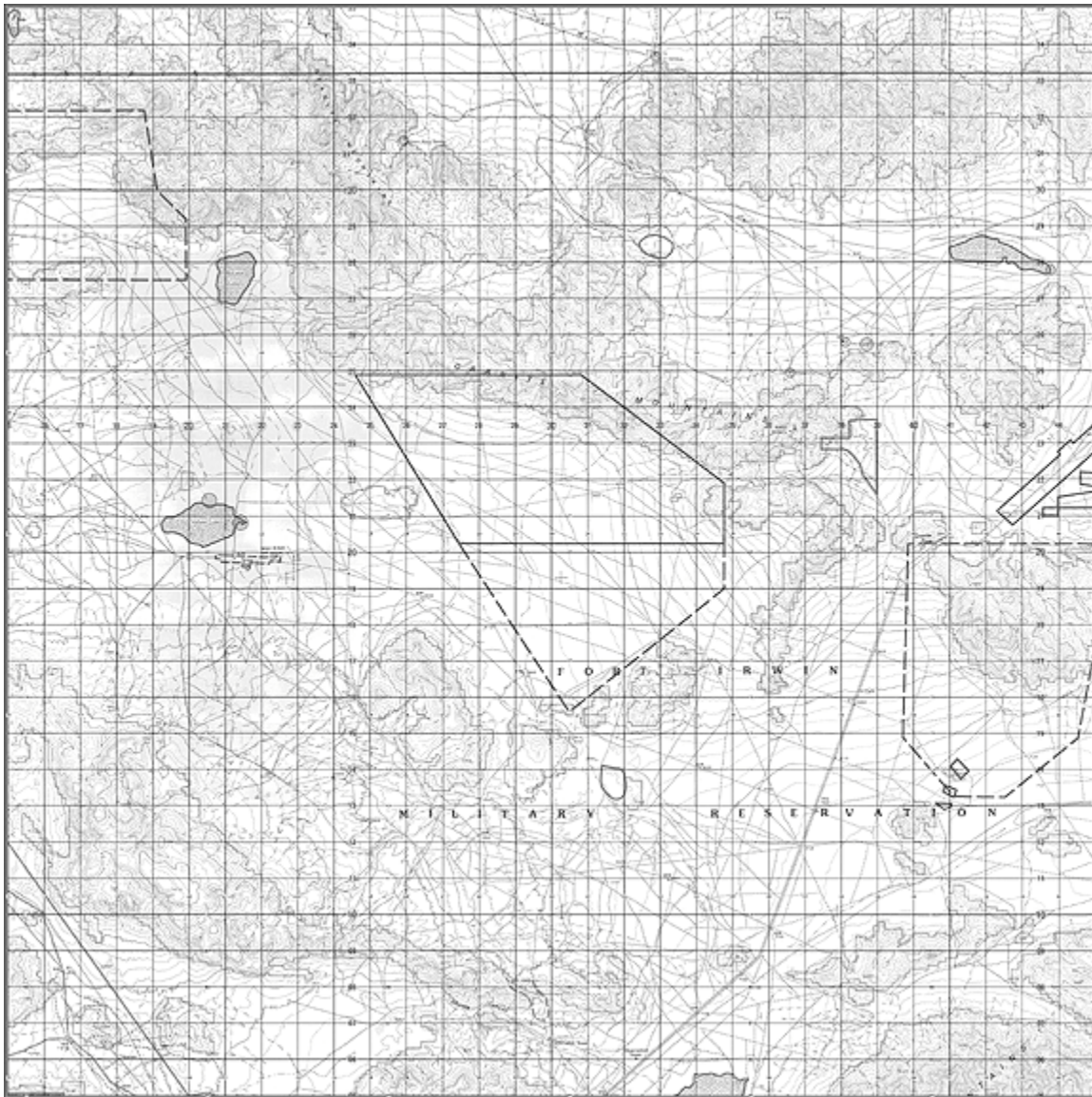
## Map215 (Fort Irwin)

Low fidelity map of NTC Fort Irwin. Grid 3022 to 6092. Topo map scan background.



## Map218 (Fort Irwin)

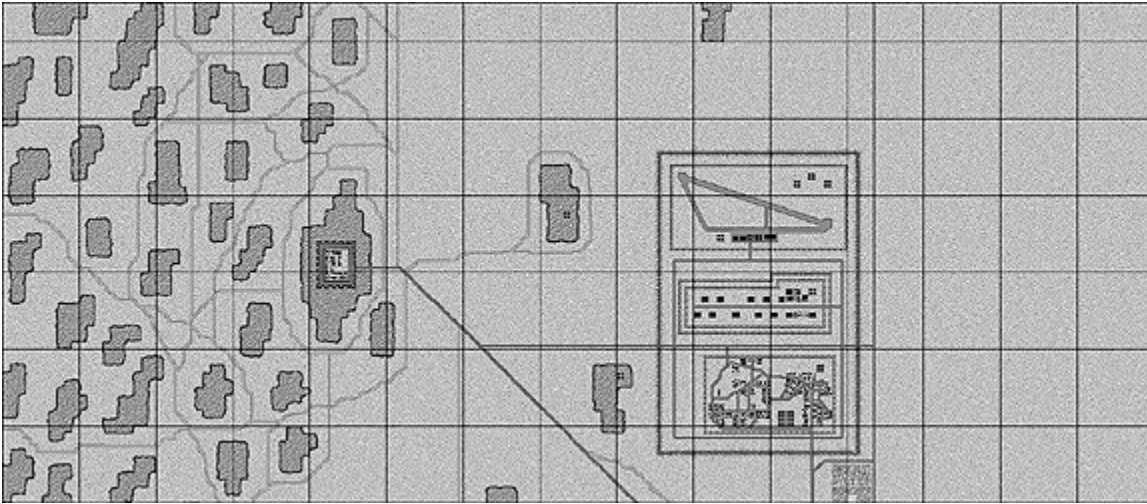
Low fidelity map of NTC Fort Irwin. Grid 1535 to 4505. Topo map scan background.





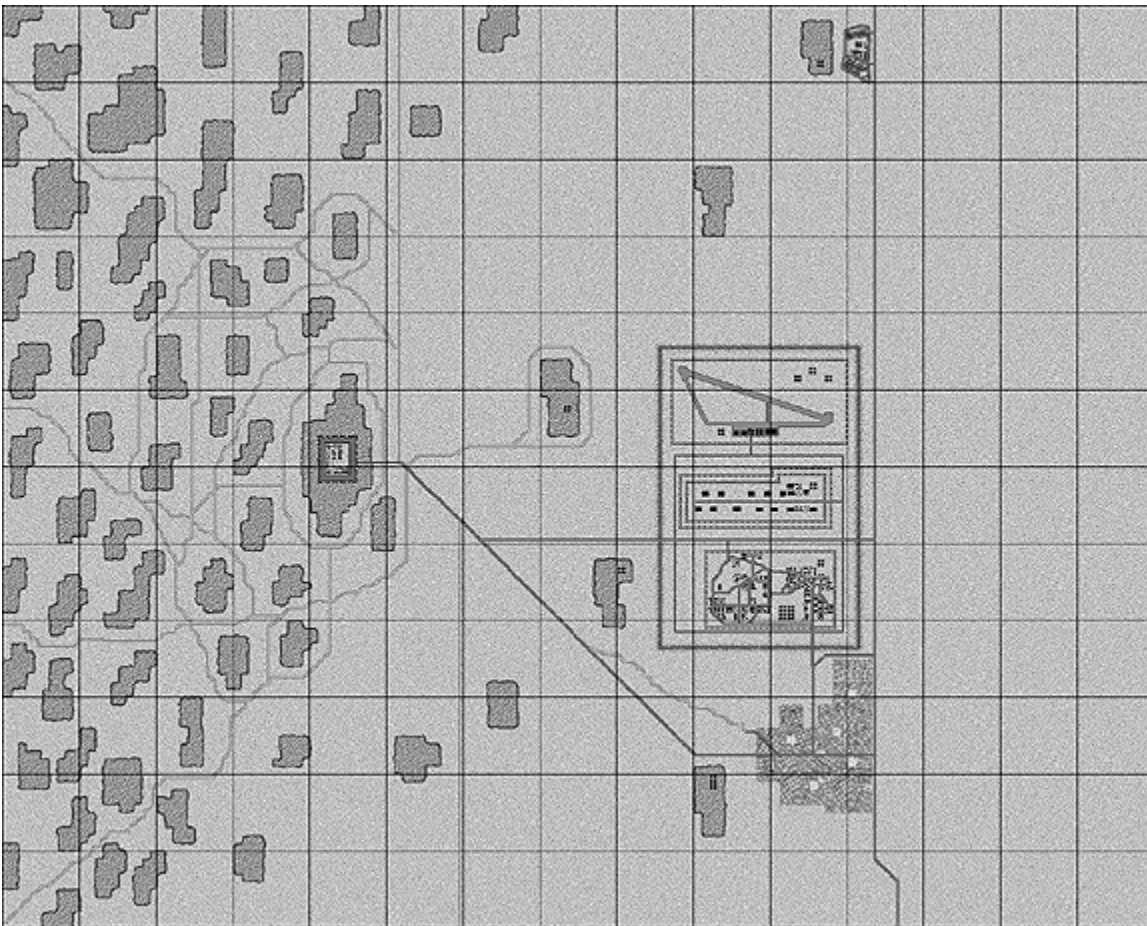
### Map219 (Desert)

Desert map with 19th Century Fortress and nearby industrial area.



### Map220 (Desert)

Larger version of Map219. Desert map with 19th Century Fortress and nearby industrial area.





## Map230 (Fort Knox)

Low fidelity map of Irvington area near Fort Knox, Kentucky. Grid 6292 to 7102. Topo map scan background.





## Map231 (Fort Knox)

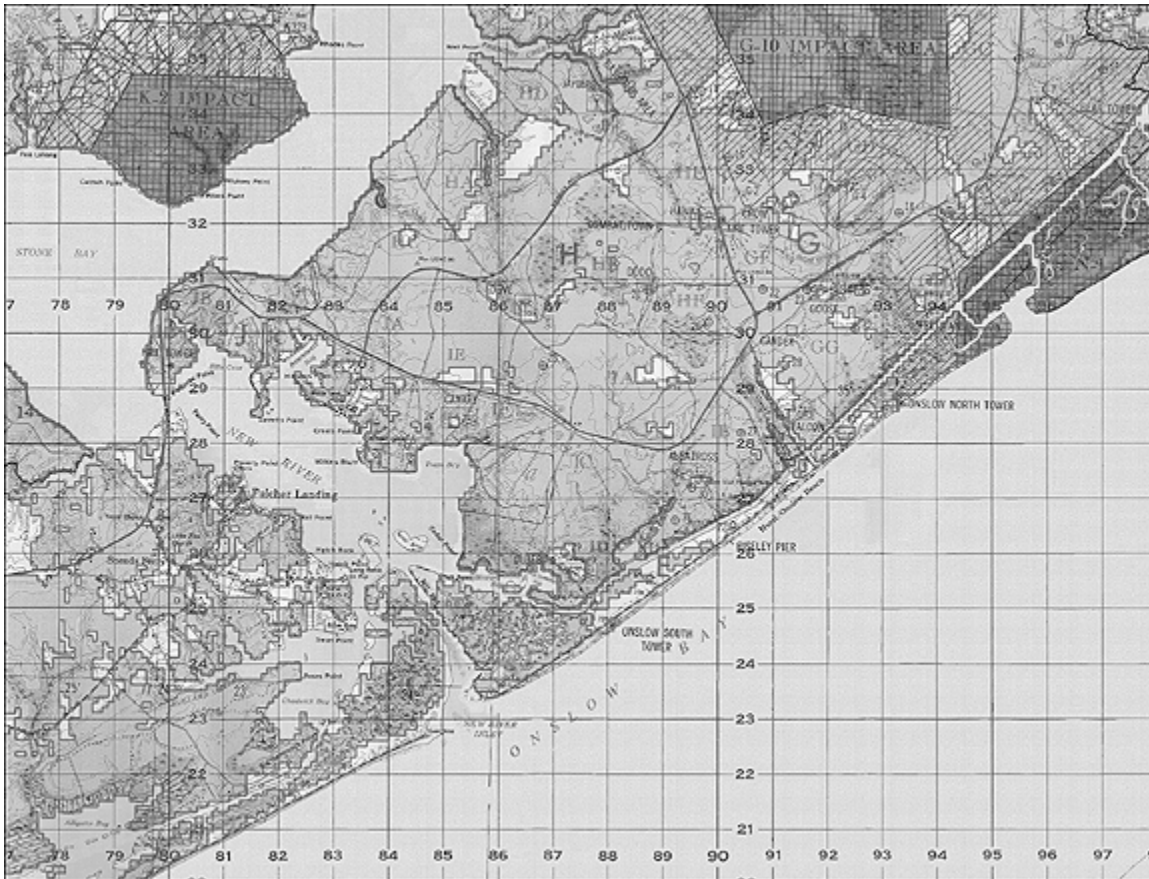
Low fidelity map of area southwest of Fort Knox, Kentucky. Grid 7396 to 9173. Topo map scan background.





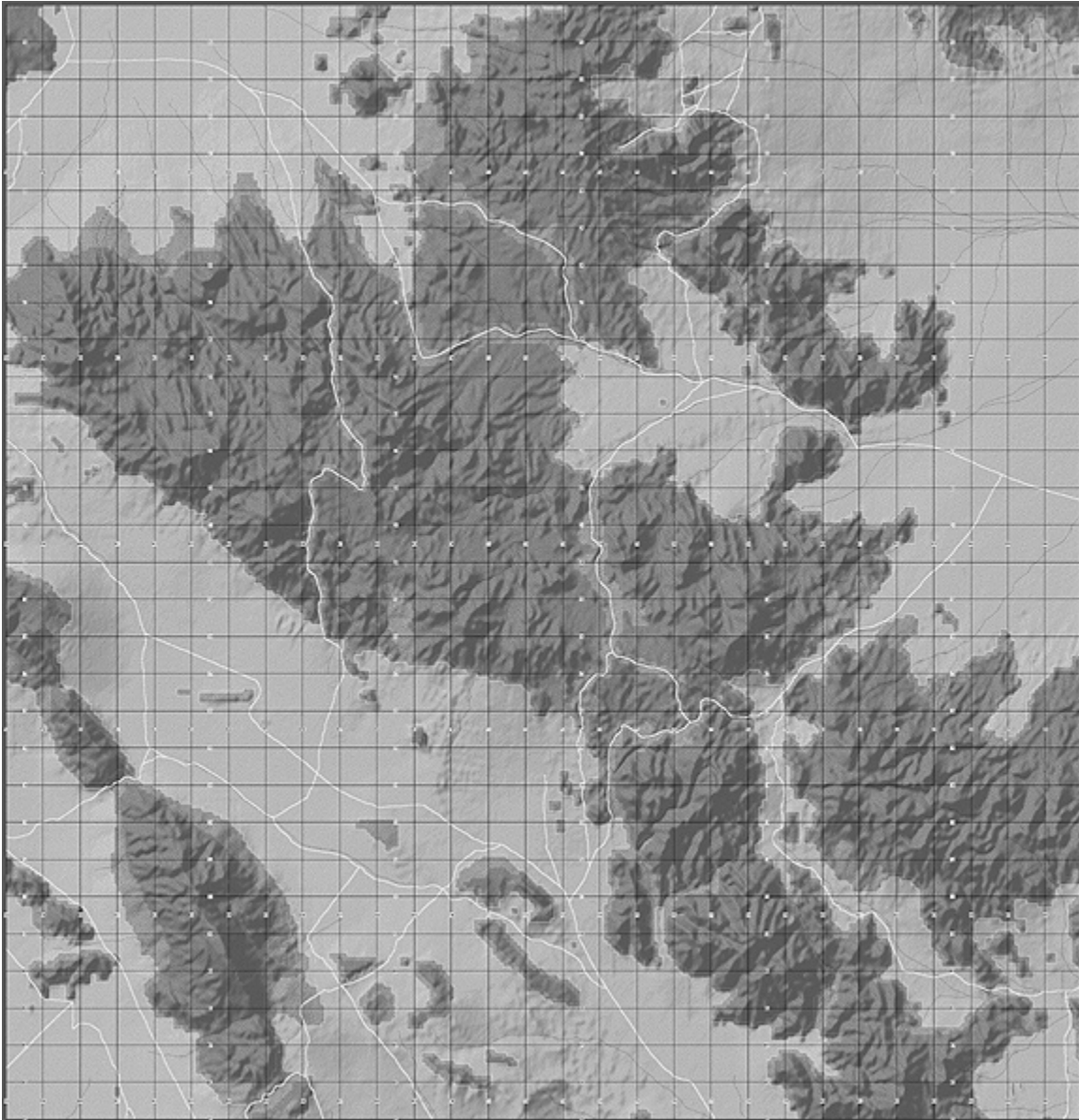
## Map240 (Camp Lejeune)

Low fidelity interpretation of a heavily wooded and soggy USMC training area at Camp Lejeune, North Carolina. Includes quite a bit of ocean and coastline. Topographic map scan background. Grid 7736 to 9820. Topo map scan background.



## Map241 (29 Palms West)

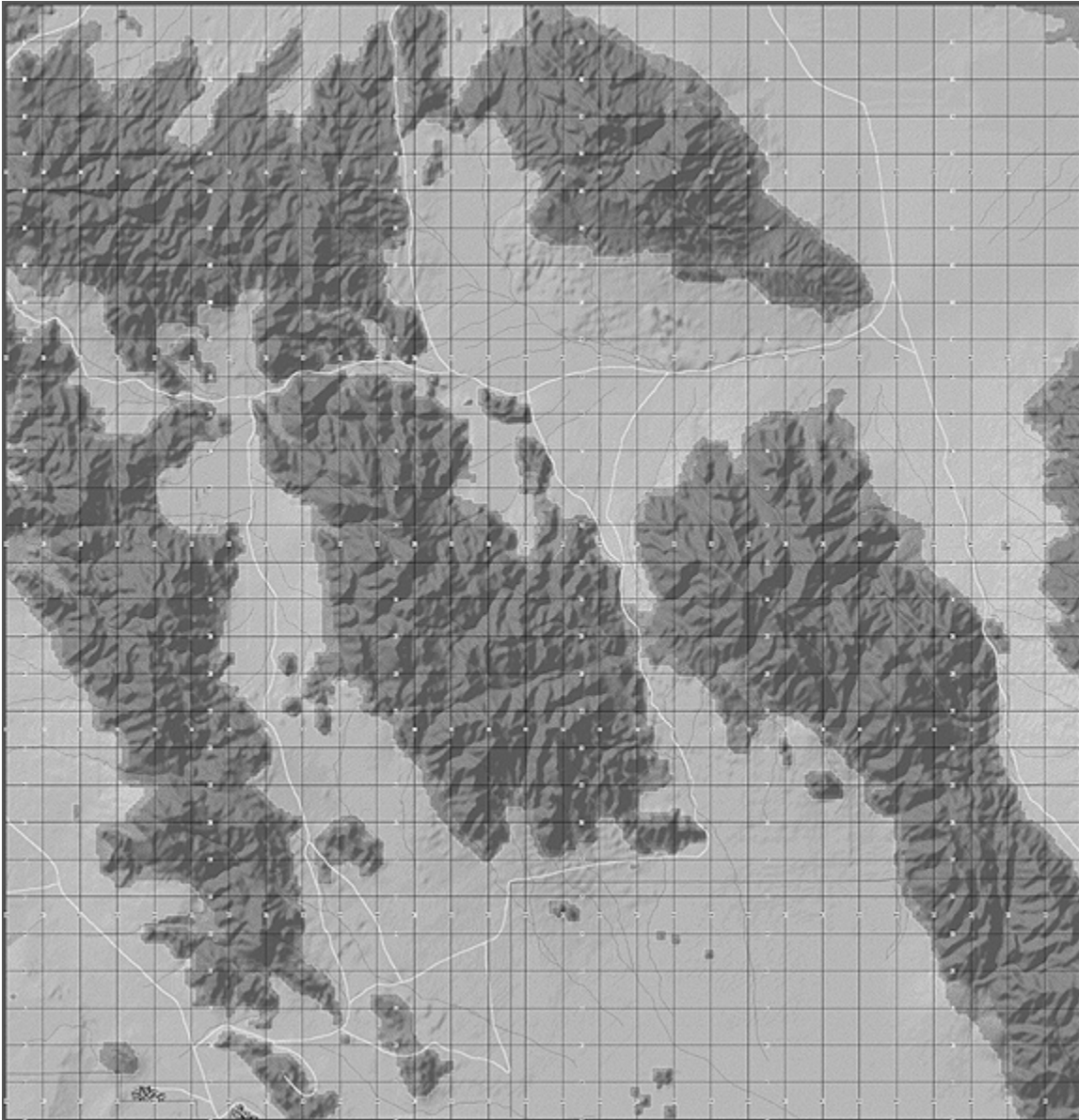
Low fidelity interpretation of a training area at Marine Corps Air Ground Combat Center Twenty Nine Palms, California. Grid 5834 to 8605.





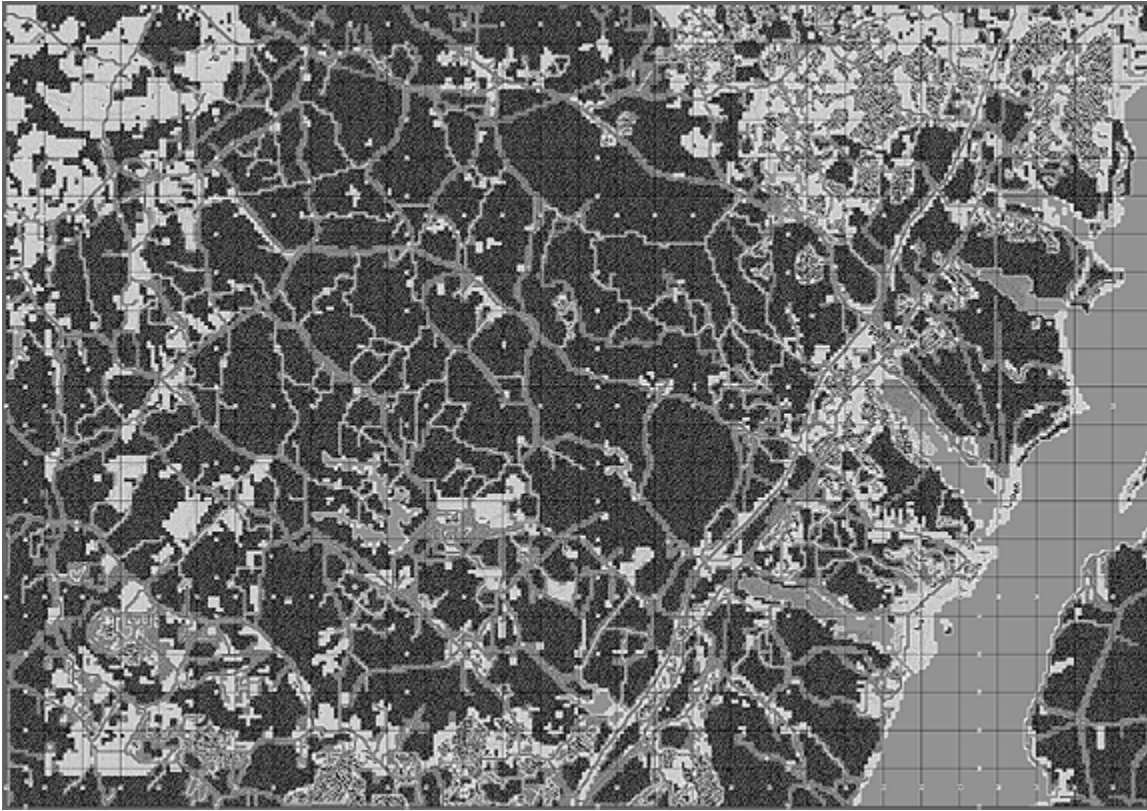
## Map242 (29 Palms East)

Low fidelity interpretation of a training area at Marine Corps Air Ground Combat Center Twenty Nine Palms, California. Grid 8018 to 0889.



## Map243 (Quantico)

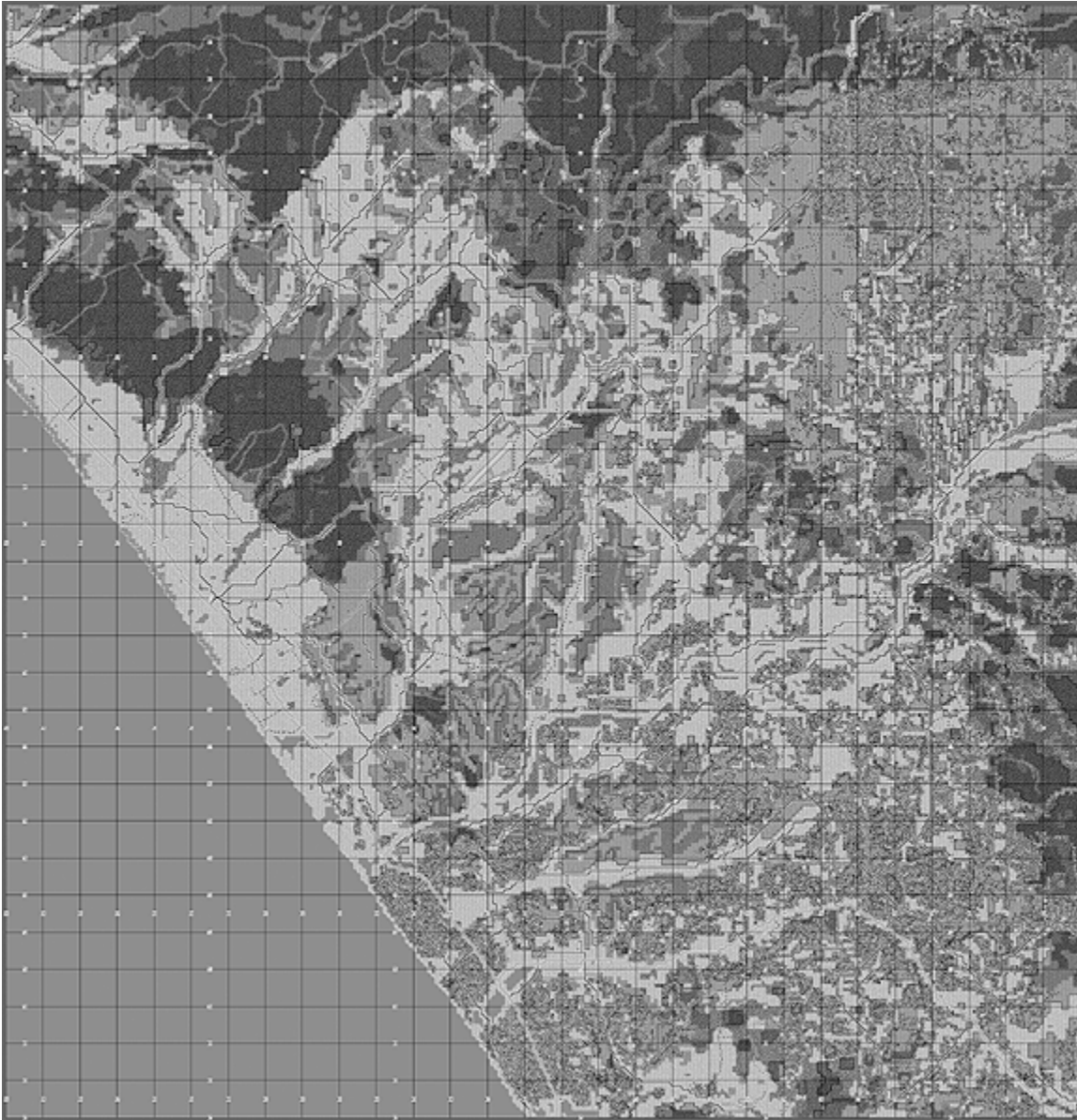
Low fidelity interpretation of area surrounding Marine Corps Base Quantico, Virginia. Grid 7560 to 0480.





## Map244 (Camp Pendleton)

Low fidelity interpretation of area surrounding Marine Corps Base Camp Pendleton, California. Grid 5496 (top left) to 8267 (bottom right).



## Map245 (Inchon)

Low fidelity interpretation of area surrounding Inchon, South Korea. Grid 8033 to 0862.

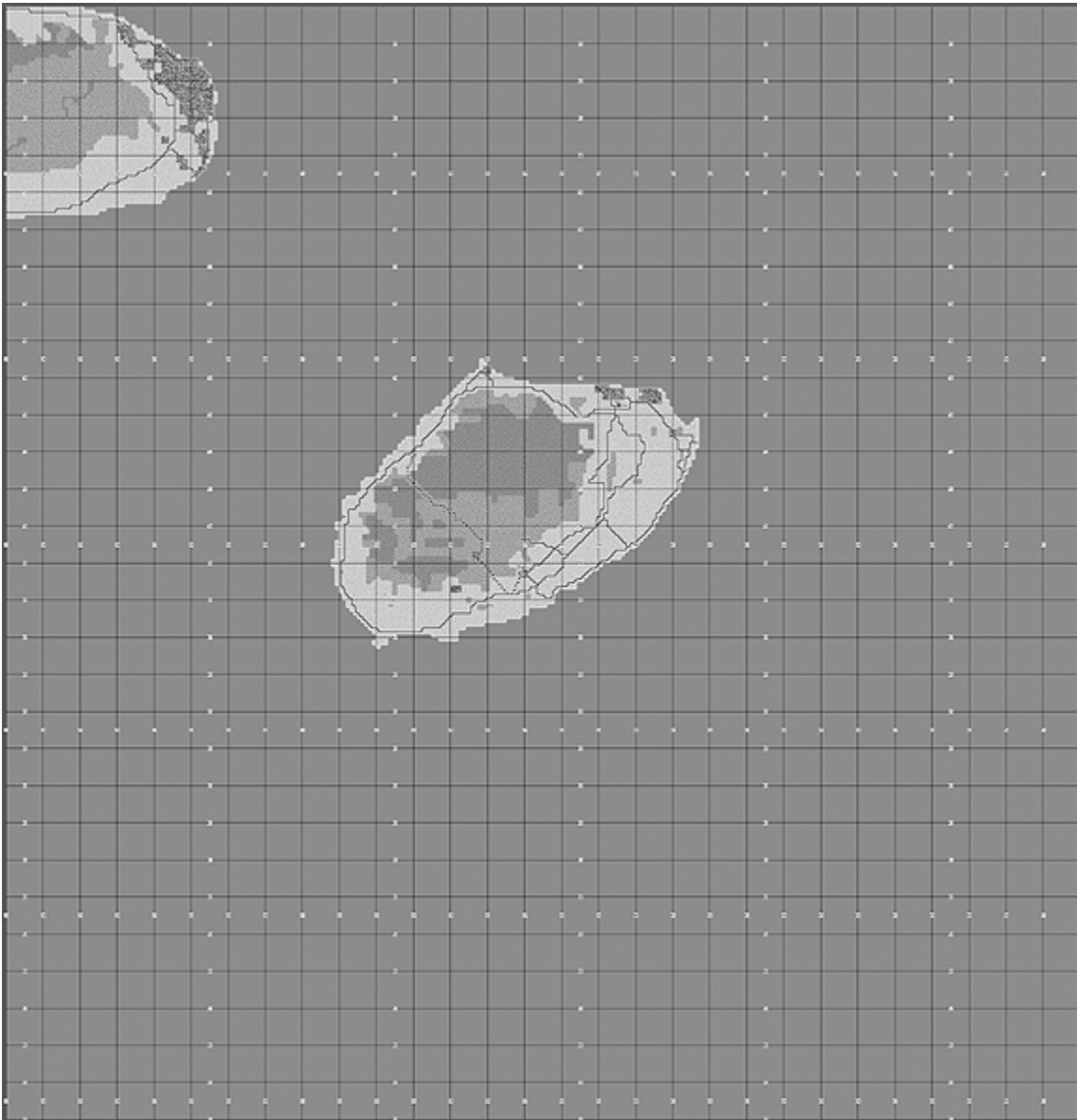
The sea approach to Inchon is represented at high tide. Much of this area would be unnavigable mud flats at low tide.





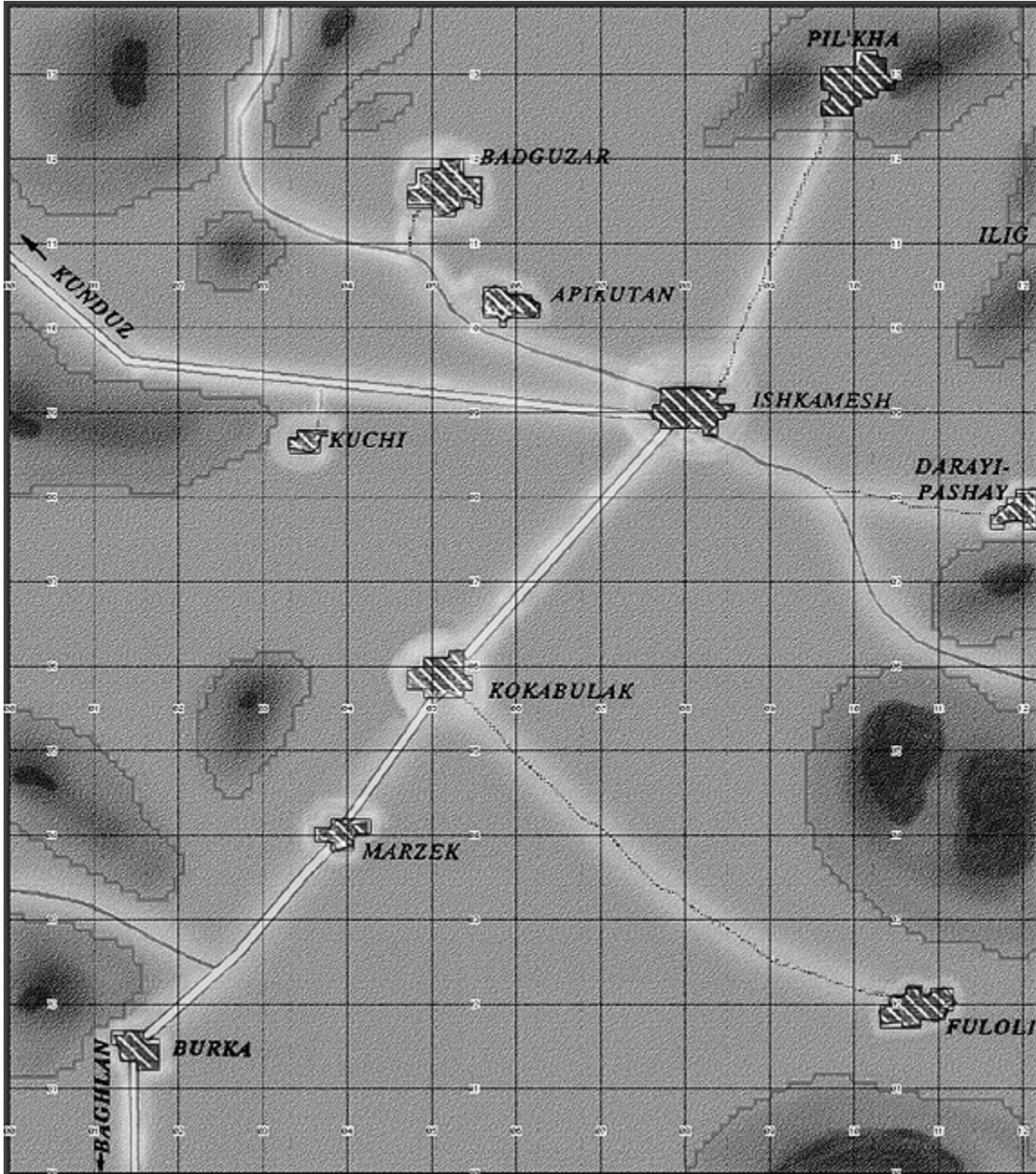
## Map246 (Larak Island)

Low fidelity interpretation of the eastern tip of Qeshm Island, Iran and all of Larak Island, Iran. Grid 2383 (top left) to 5154 (bottom right).



## Map250 (Afghanistan)

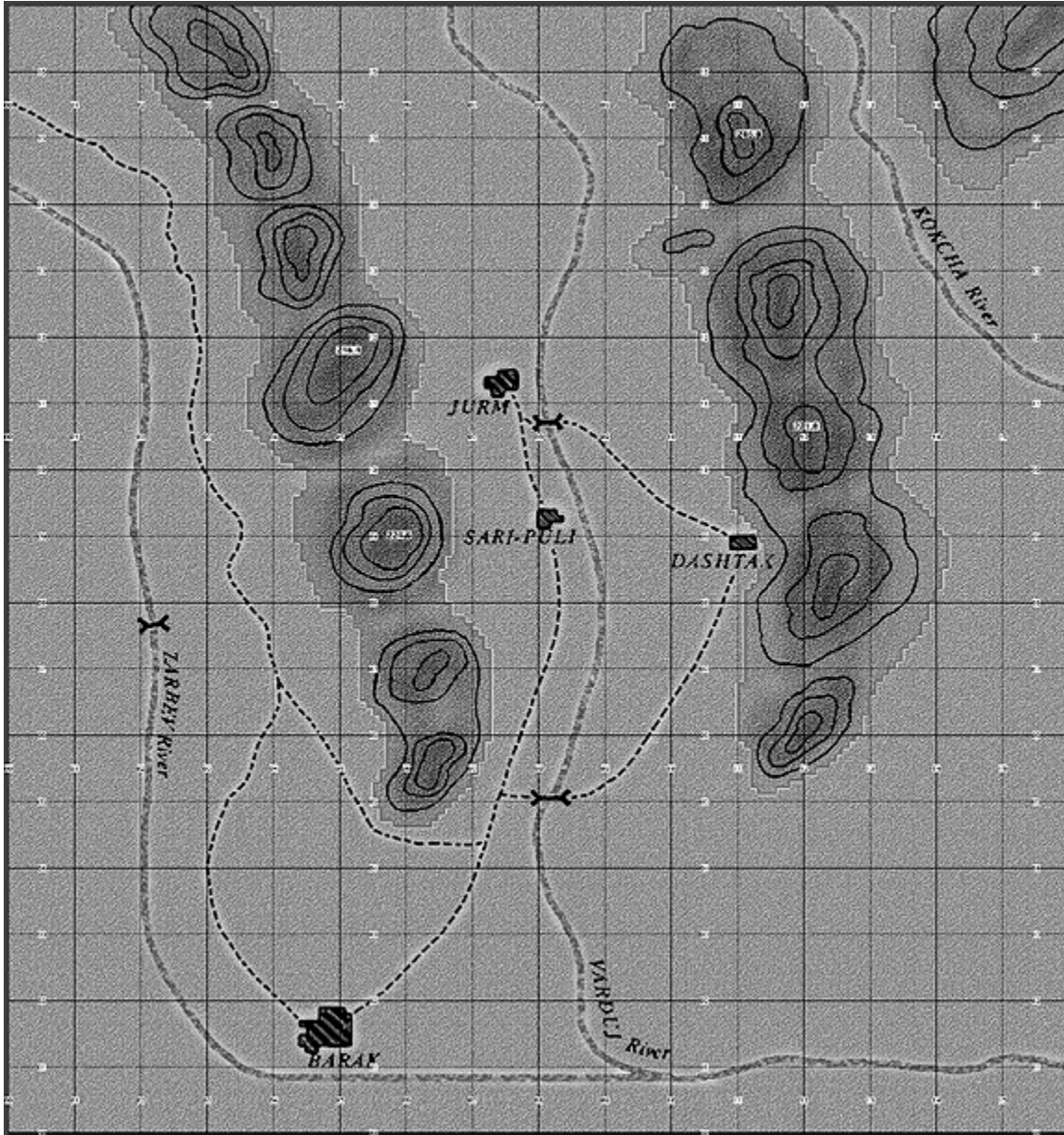
Very low fidelity representation of an area in Northern Afghanistan 60 kilometers Southeast of the city of Kunduz. The map is centered on the villages of Ishkamesh and Kokabulak. The map is based on a map sketch from page 20 of "The Bear Went Over The Mountain". The companion article is titled "Blocking, Searching For And Destroying A Guerrilla force In Ishkamesh Region" by Major A. M. Kovyrshin and is included in the map set as an Acrobat Reader PDF file. 12 km x 13.8 km map.





## Map251 (Afghanistan)

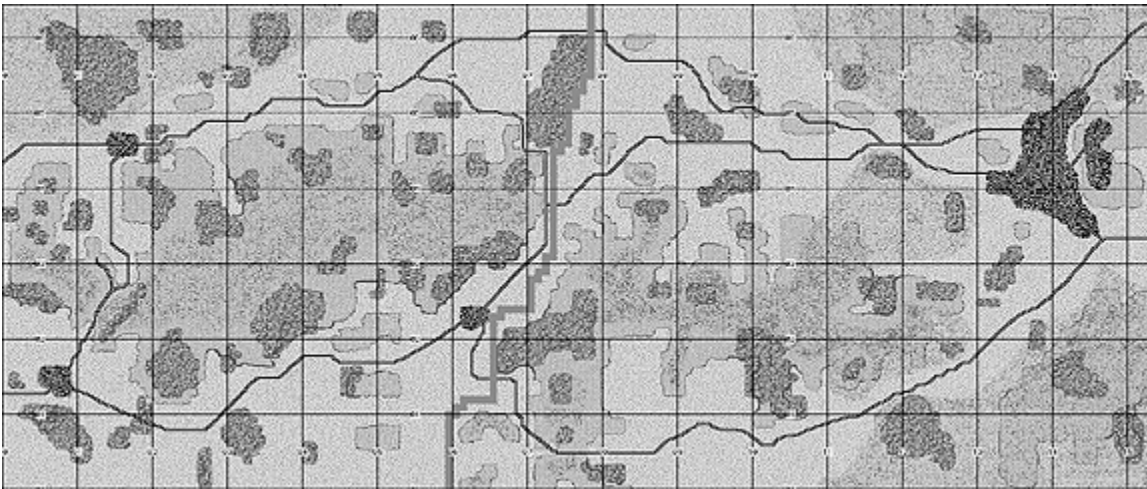
Very low fidelity representation of an area around the village of Jurm in the Varduj Valley of Afghanistan. The map is based on a map sketch from page 34 of "The Bear Went Over The Mountain". The companion article is titled "Blocking, Sweeping And Destroying The Mujahideen In The Varduj Valley" by Major S.V. Krutyakov and is included in the map set as an Acrobat Reader PDF file. 16 km x 17 km map.





## Map260

Map001 with a north to south river in the middle of the map.



## Map321\_323 (Jamaica)

Map 321. Low fidelity map of area in Jamaica. Grid 4170 to 7089. Topo map scan background. Extensive coverage by sugar cane fields (yellowish areas) encoded as being at maximum growth. Originally coded by the Canadian Army. CAUTION: Map is very large and will require an extreme amount of memory if a color setting greater than 256 colors is used.

Map 323. Low fidelity map of area in Jamaica. Grid 4170 to 7089. Topo map scan background. Extensive coverage by sugar cane fields (yellowish areas) encoded as being at minimum growth.





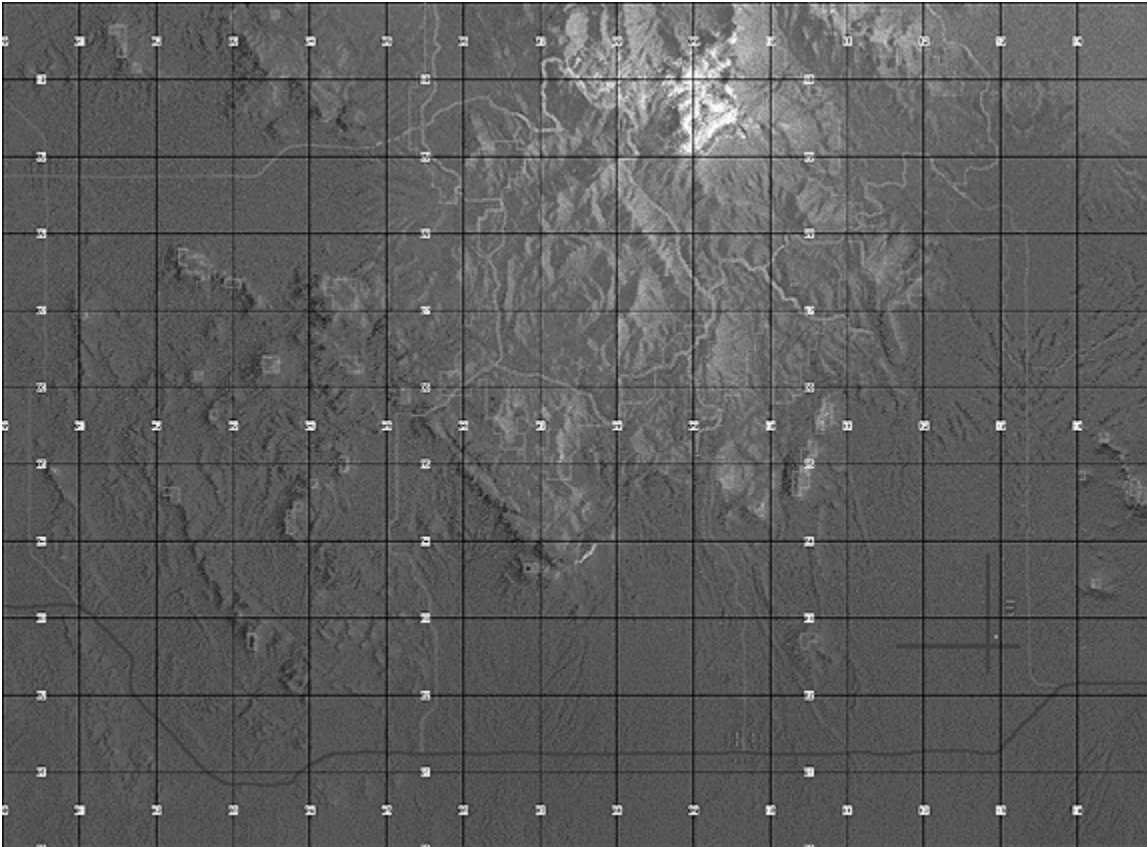
## Map325 (Jamaica)

Low fidelity map of Kingston/Spanish Town area in Jamaica. Grid 9083 to 0996. Topo map scan background. Originally coded by the Canadian Army.



## Map500

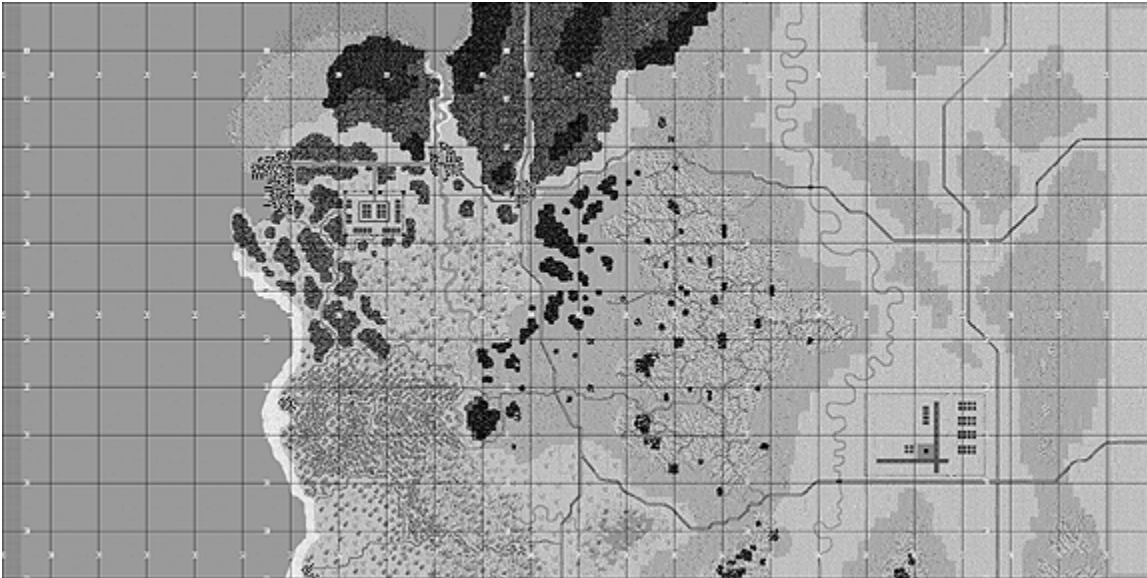
A remote landscape with jagged, rocky mountains and rolling grassland. Includes a river, mountain trails and a small airfield. Particular attention was paid to modeling realistic LOS in mountain terrain. Good for scenarios involving a rugged, mountain defense or ferreting out a terrorist group in a mountainous region. Size: 15 km x 11 km. Author: Riki Tikki (John Mckinney).





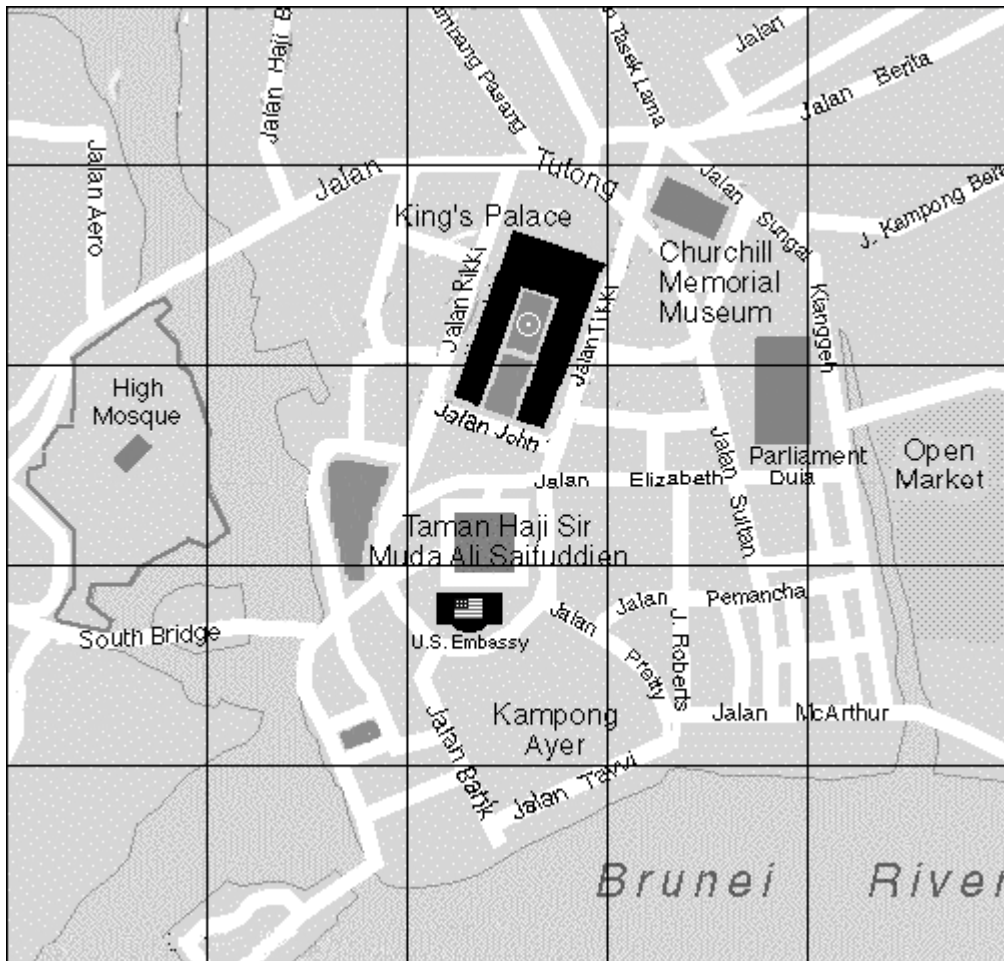
## Map502

Designed for amphibious assault scenarios, this map features beaches, cliffs, mountains, swamps, mangroves, a river, a port, sugar cane fields and an airport. Also features an at-sea staging area for launching helos and landing craft as well as a setup area for reinforcements. Size: 24 km x 12 km. Author: Riki Tikki (John Mckinney).



## Map503 (Brunei)

Low fidelity map of urban area surrounding the American Embassy in Brunei.



## Map504

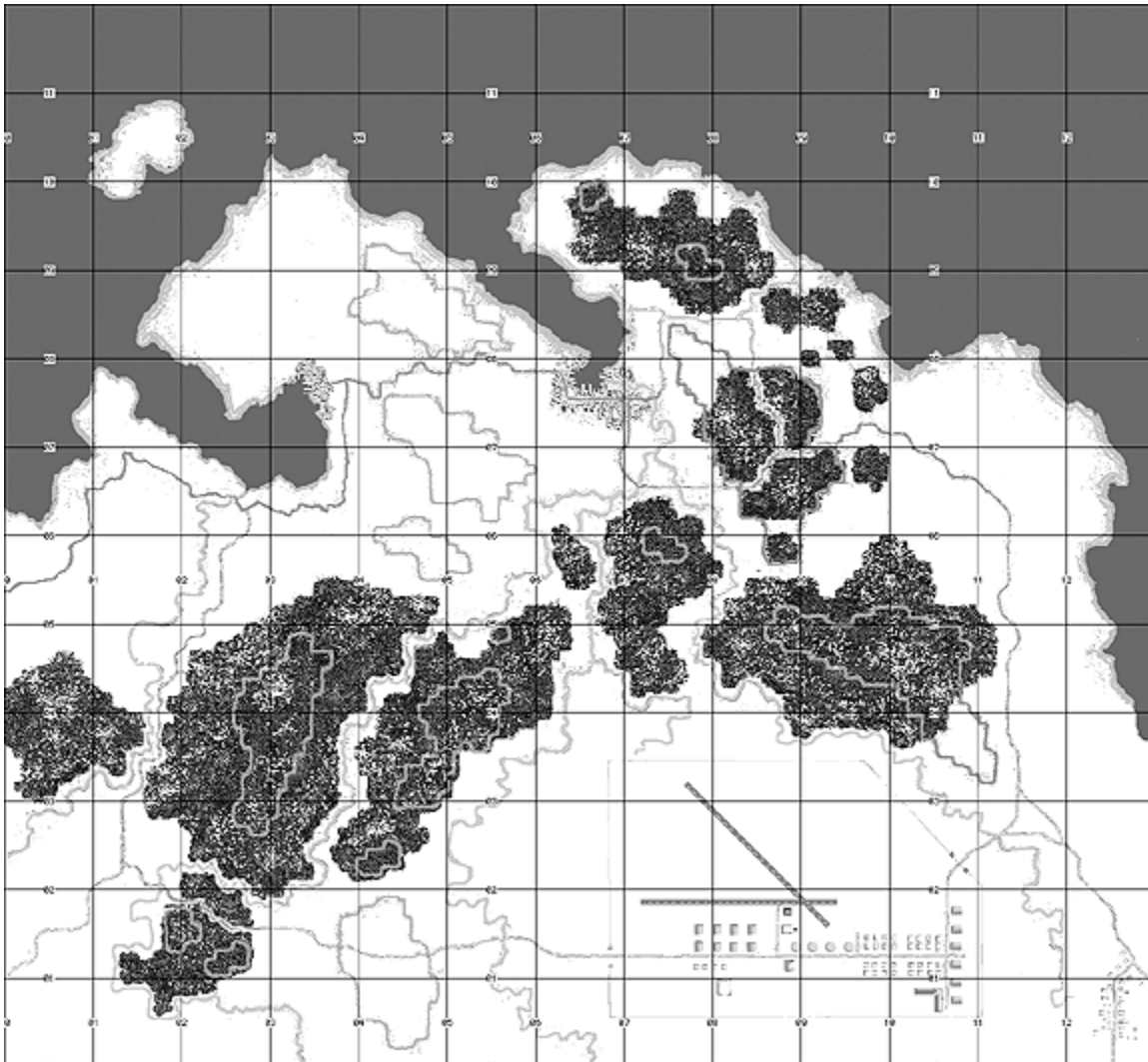
Wooded map with five to nine kilometers of ocean on the West end and several industrial installations.





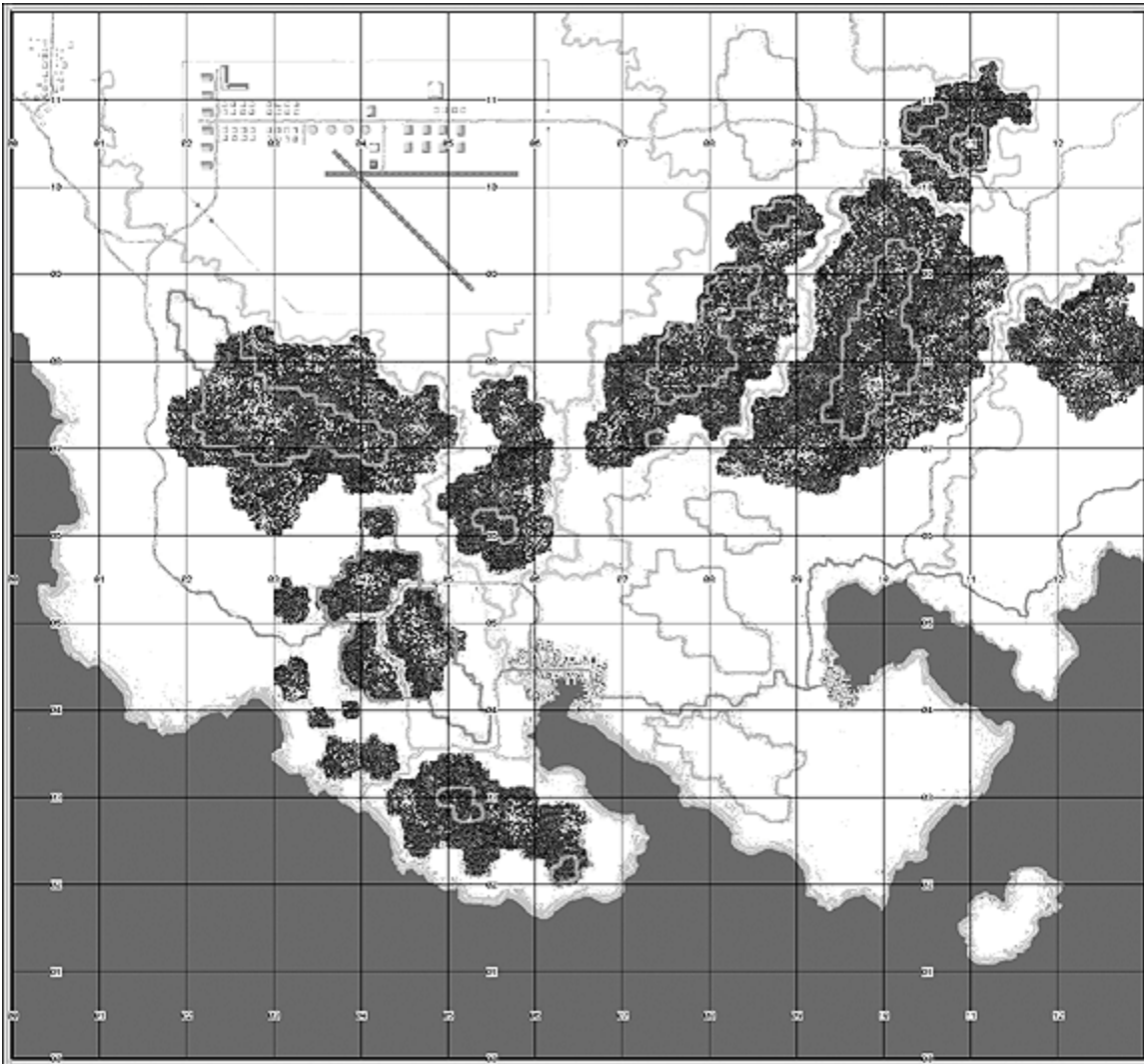
## Map505 (Snow)

First in a series of "snow maps" designed specifically for the Global Thunder MBX. Portrays a snow-covered coastal area with a northern shoreline, several hills, a small town and an airport. Varying movement costs are used to represent drifts and deep snow of unknown depth. Size: 10 km. x 8 km. Author: Rikki Tikki (John Mckinney).



## Map506 (Snow)

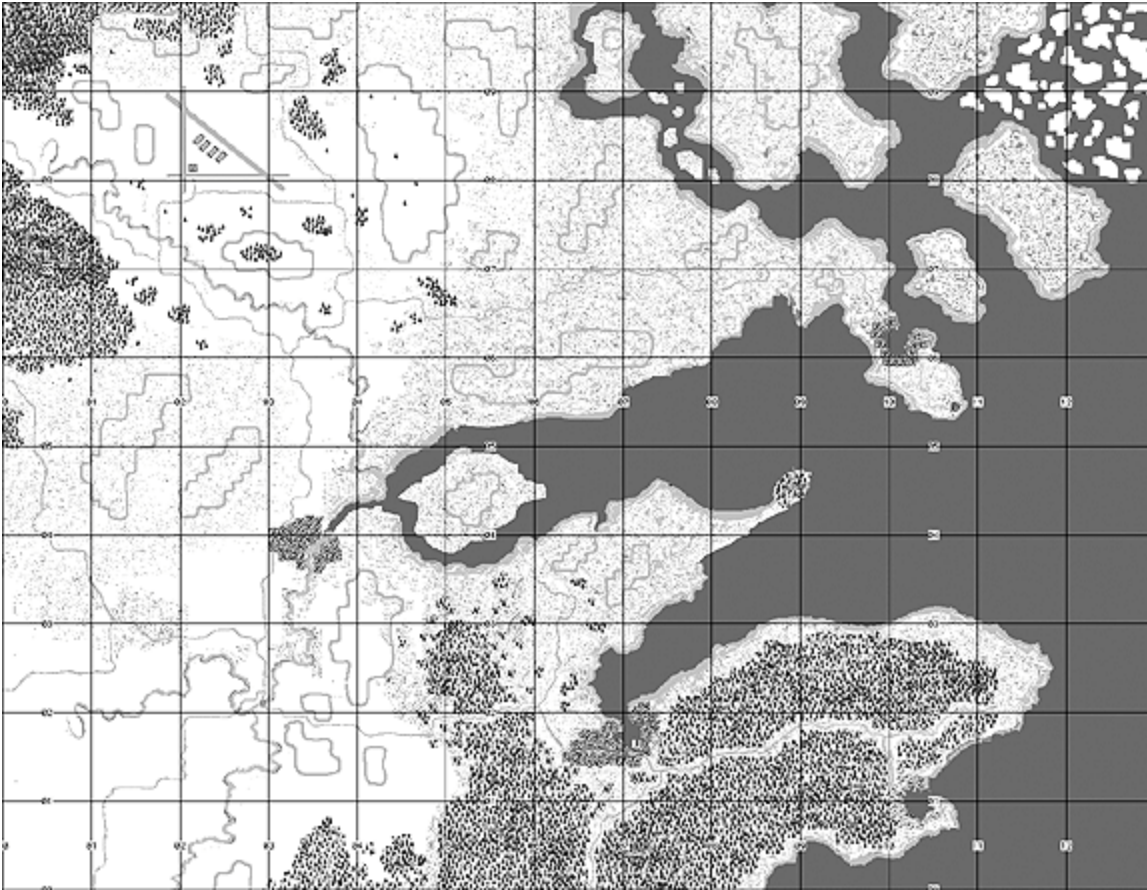
Second in the "snow maps" series. The same as Map 505 but with a southern coastline. Size: 10 km. x 8 km. Author: Rikki Tikki (John Mckinney).





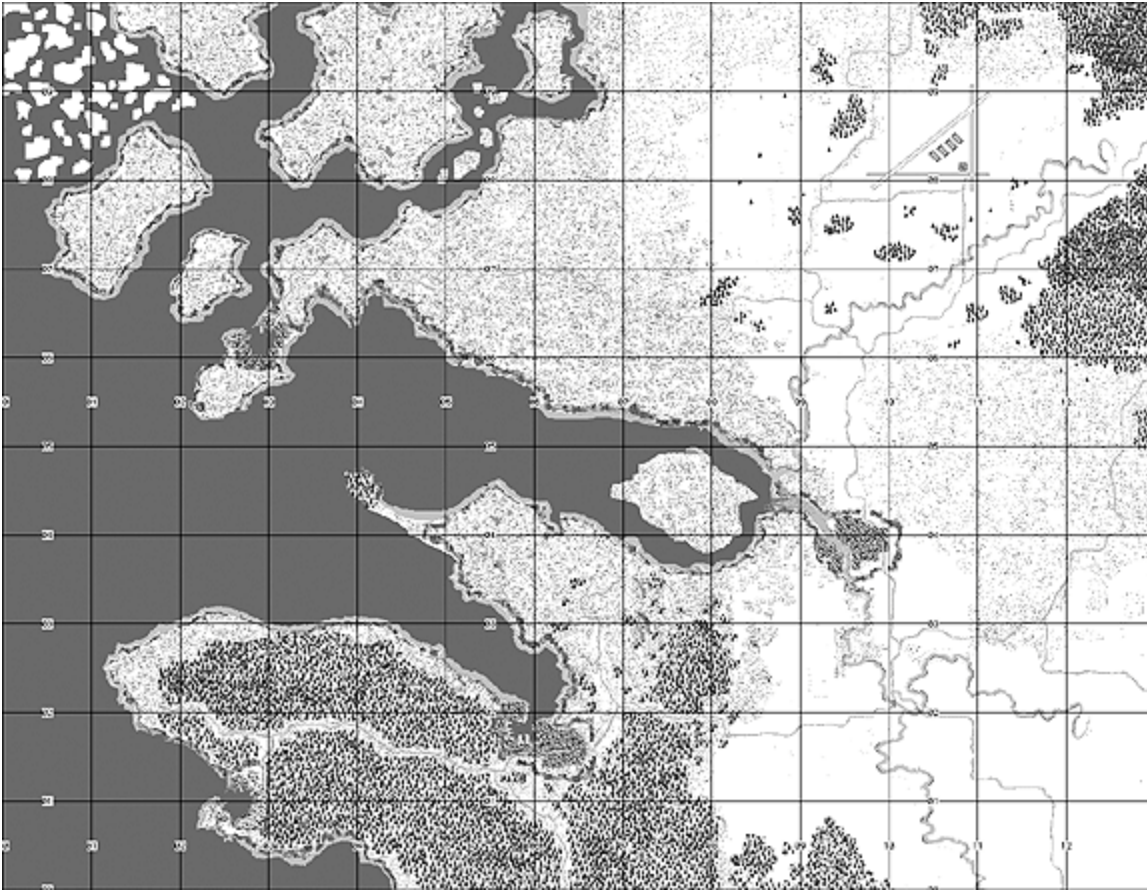
## Map507 (Snow)

Third in the "snow map" series, this map represents low-lying coastline with ice floes in the north and an inlet with a small harbor and woods in the south. Size: 13 km. x 10 km. Author: Rikki Tikki (John Mckinney).



## Map508 (Snow)

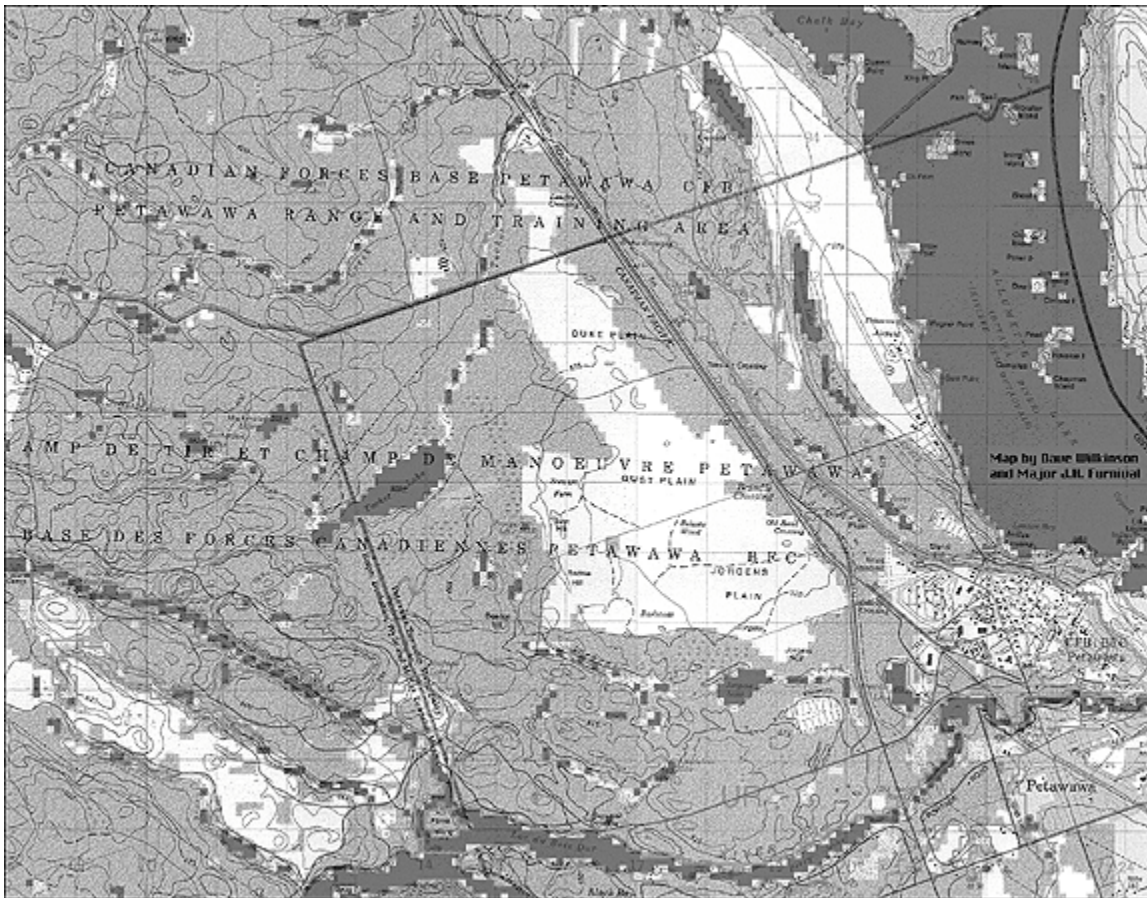
Fourth in the "snow maps" series. A mirror-image of Map 507 except that it is mostly all on high ground, giving the effect of a Norwegian fjord. Size: 13 km. x 8 km. Author: Rikki Tikki (John Mckinney).





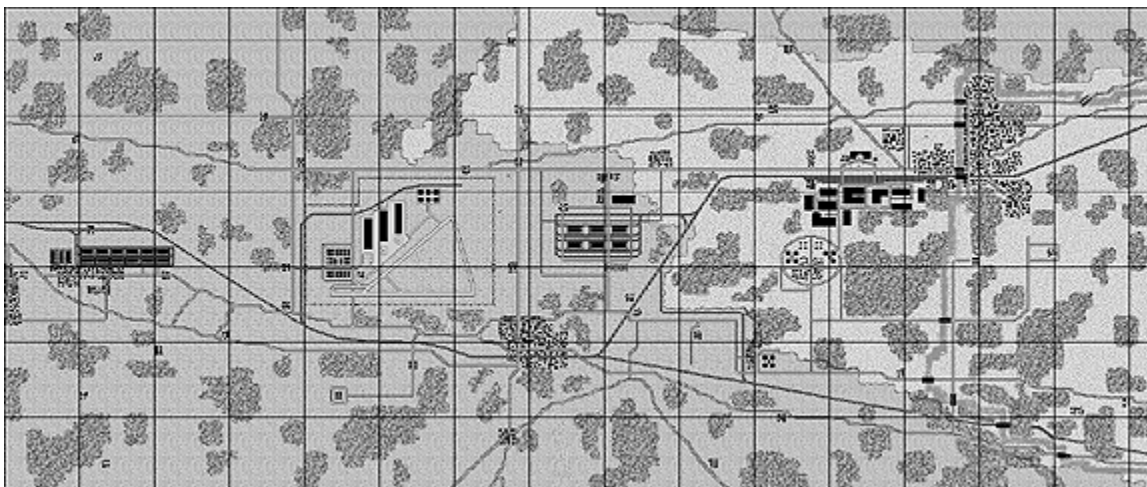
## Map510 (Petawawa)

Low fidelity map of Petawawa training area in Canada. Grid 0883 to 2495. Topo map scan background. Originally coded by the Canadian Army.



## Map515

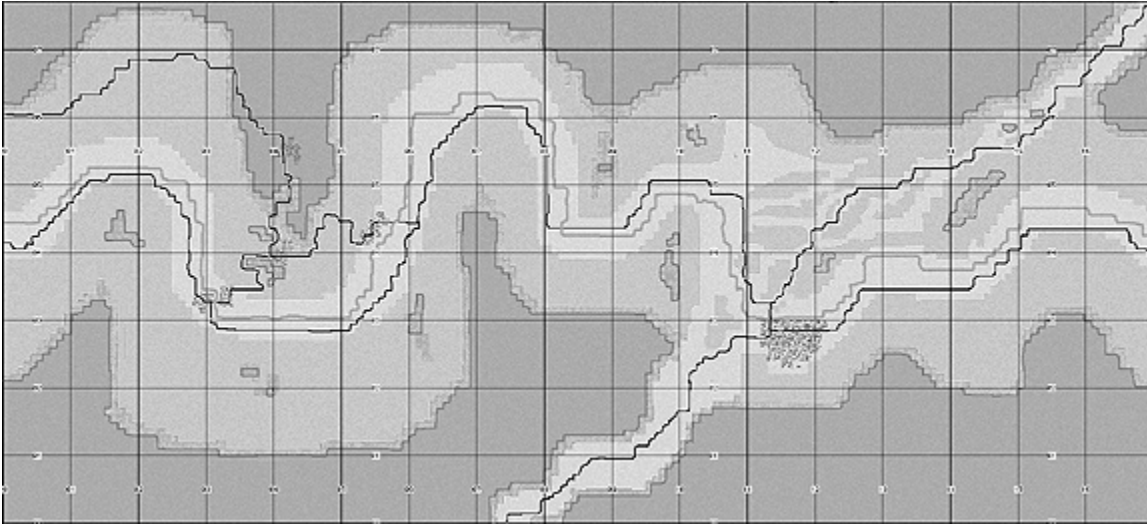
Wooded and industrial map similar to Map015 but with more woods and a river on the East end. Size: 15.3 km. x 6.6 km. Authors: Riki Tikki (John Mckinney) & Mitchell Mock.





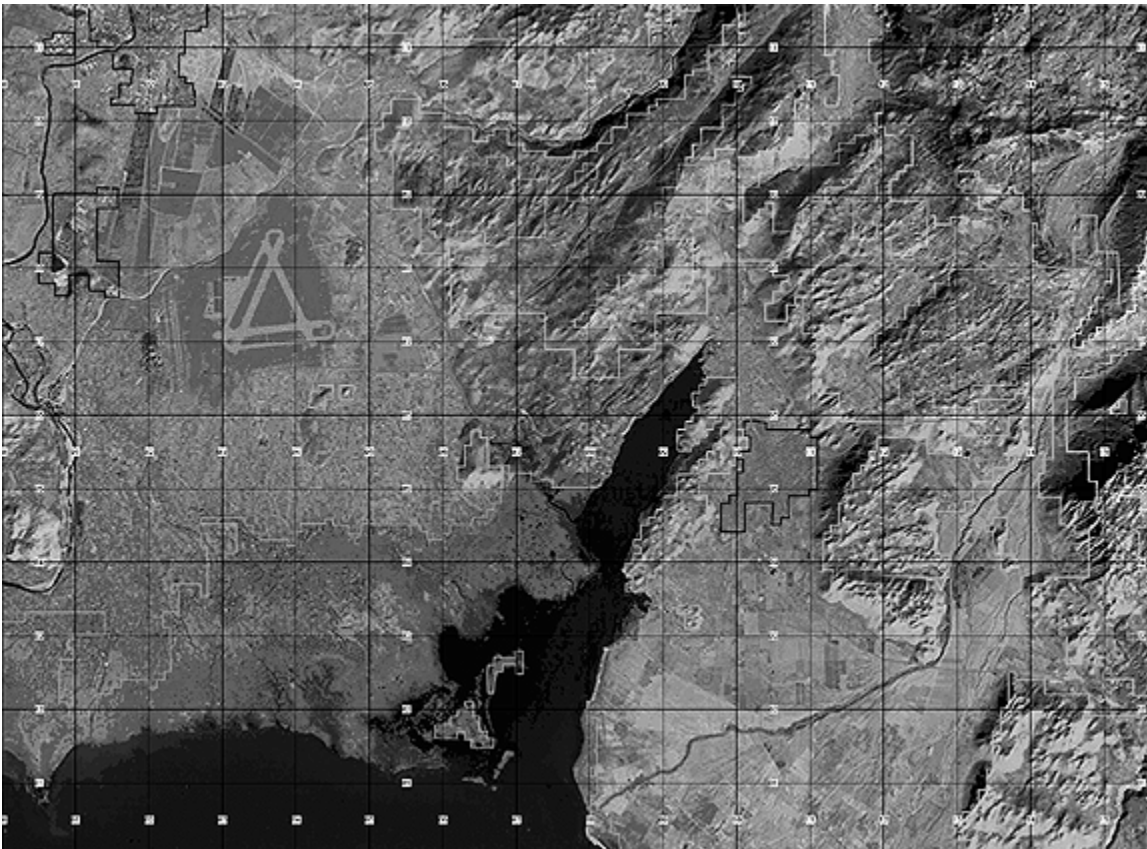
### Map521 (Afghanistan)

This map represents a steep sided valley in Afghanistan with a couple of small towns and a scattering of villages. Designed for Soviet/Mujahideen engagements, particularly with convoy ambushes in mind. Size: 17 km x 7.7 km. Author: Mark Bisson.



### Map522 (Serbia)

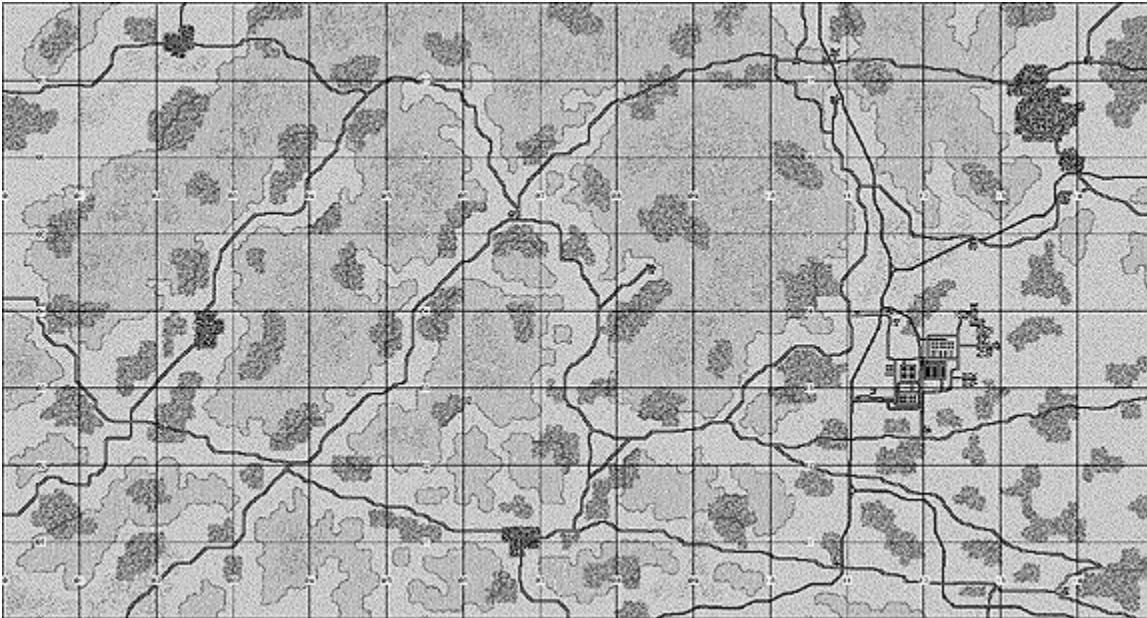
Based on a satellite image of an area of Serbia with a couple of additions to the landscape from the author. Includes urban areas, mountains, the edge of large lake with associated marsh and an airfield. Size: 15.7 x 11.6 km. Author: Mark Bisson.





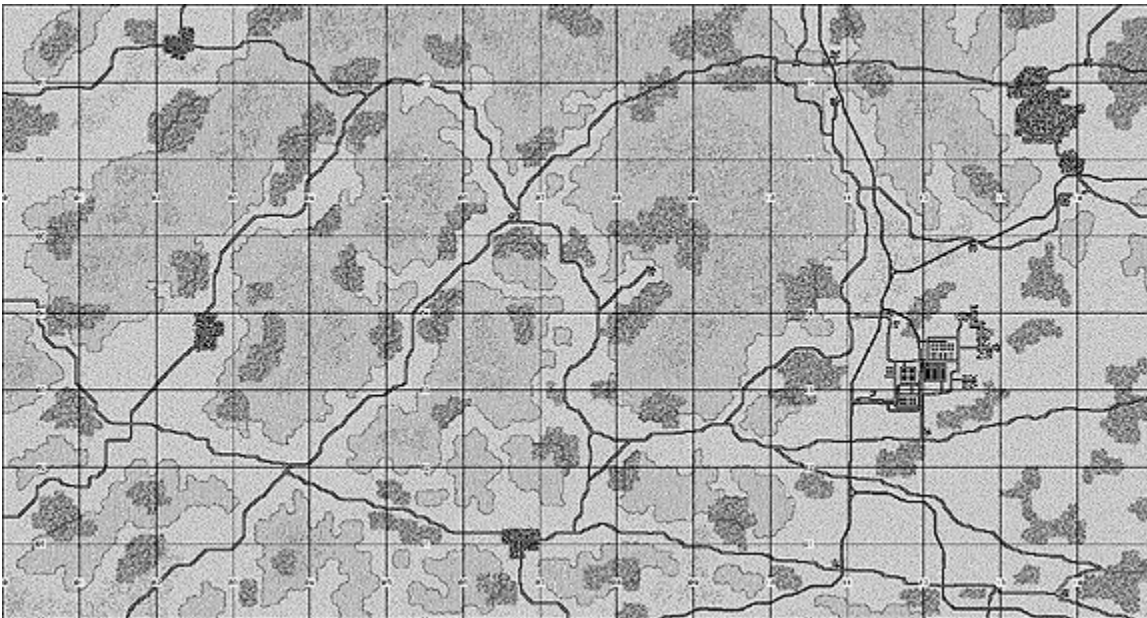
### Map540

Medium-size map with large area of broken high ground forming several valleys. Lightly wooded with a mix of clear and rough terrain, it includes an industrial plant and small city as likely objectives. Designed with running defenses against a larger attacker in mind. Size: 15 km x 8 km. Author: Alex Ingles.



### Map541

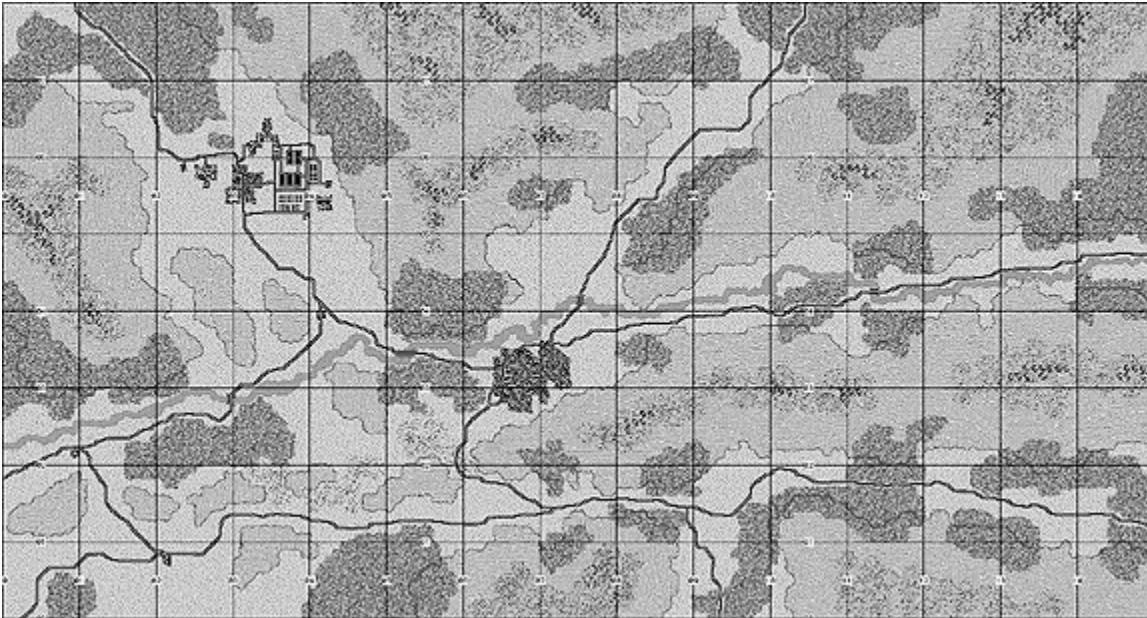
A variant of Map540, this map has less woods to allow longer-range weapons to come into play. Size: 15 km x 8 km. Author: Alex Ingles.





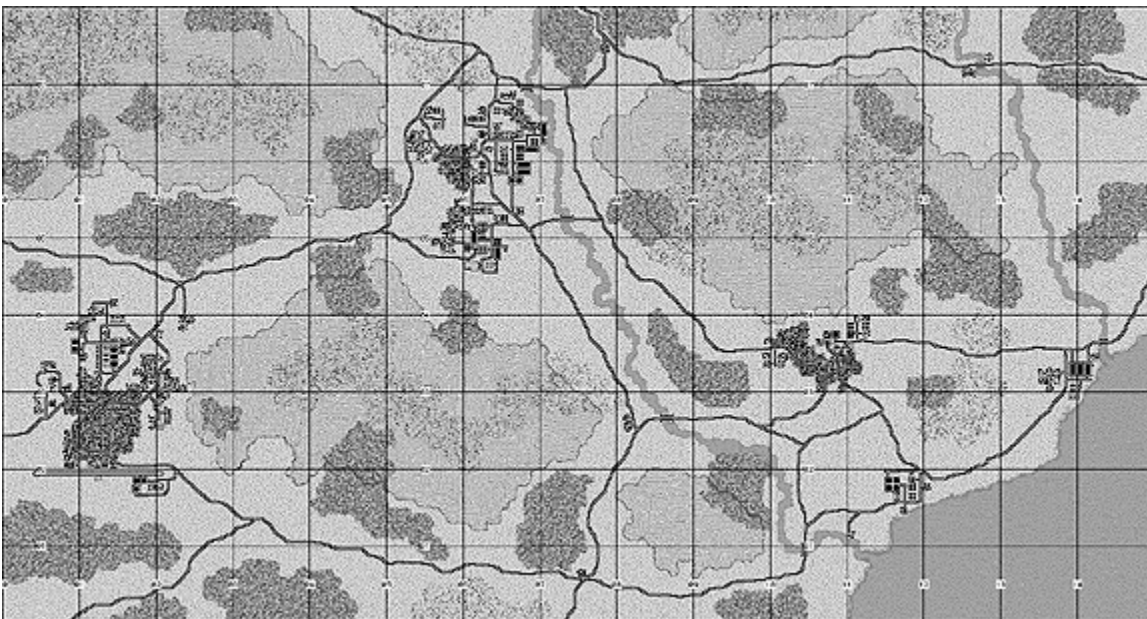
## Map542

Medium-size map with large area of broken high ground forming several converging valleys. A river on an east-west line runs through it and there are several medium-sized woods. With a mix of clear and rough terrain, it includes bridges, an industrial plant and small city as likely objectives. Size: 15 km x 8 km. Author: Alex Ingles.



## Map544

Medium-size map with some large areas of high ground. Two rivers run through it on a North-South line and there are several medium-sized woods. With a mix of clear and rough terrain, it includes several industrial areas, towns and bridges as likely objectives. A shore-line allows for amphibious operations. Size: 15 km x 8 km. Author: Alex Ingles.





## Map545

Medium-size map depicting a valley on a North-South line. There are several large to medium-sized woods on the sides of the valley with more sparse coverage on higher elevations. With a mix of clear and rough terrain, it includes an airfield, two towns and an industrial area as likely objectives. Size: 15 x 8 kms. Author; Alex Ingles.



## Map565

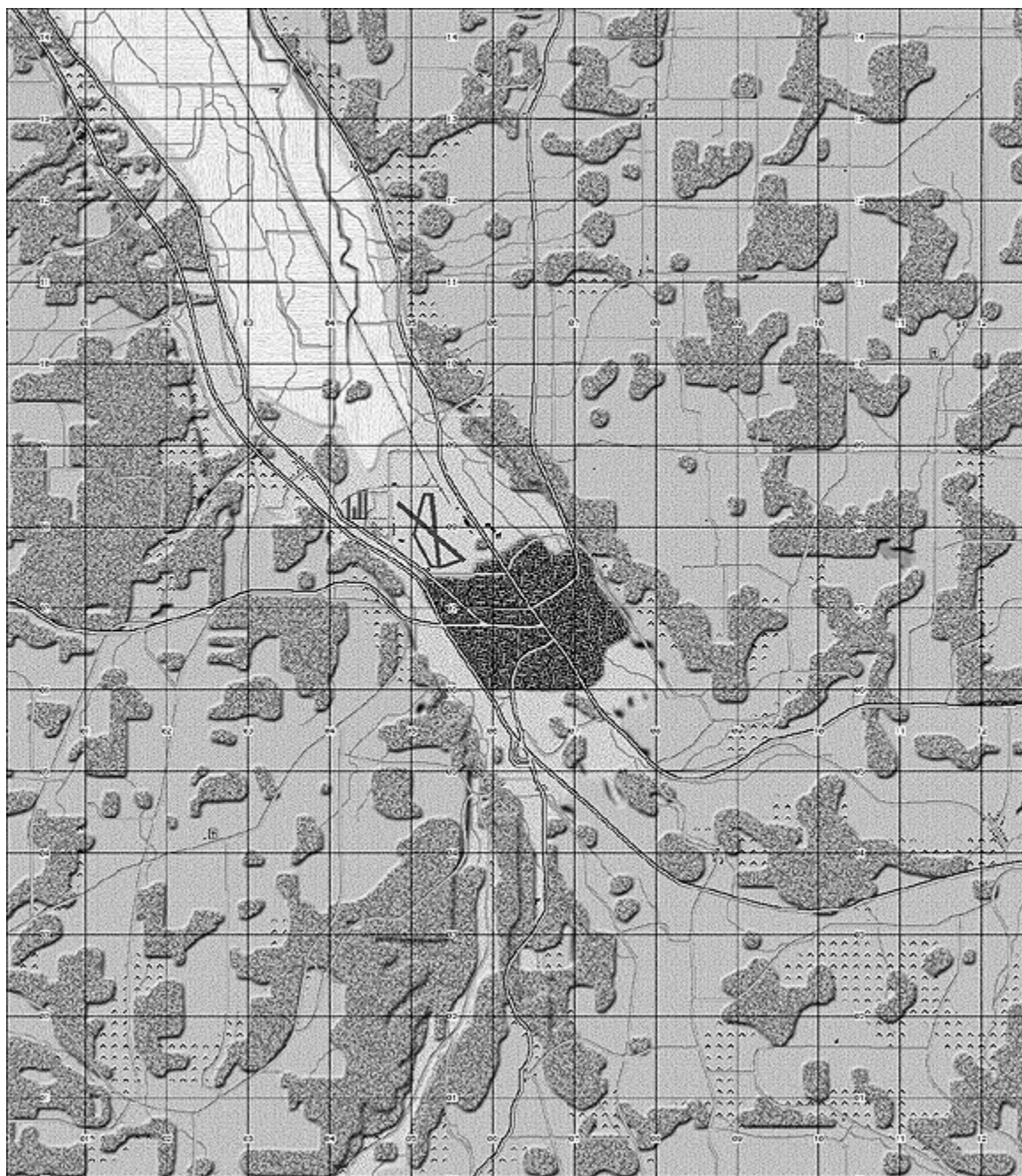
Developed with small PBEMs in mind. This map depicts a small town with an airport uphill from it. Marshes are traversable (occasionally Rough 3), and sometimes block LOS. The airport is coded as road. Some non-wooded hill areas are Rough 1. Size: 10 x6 km. Author: Darius Kasinskas.





## Map567

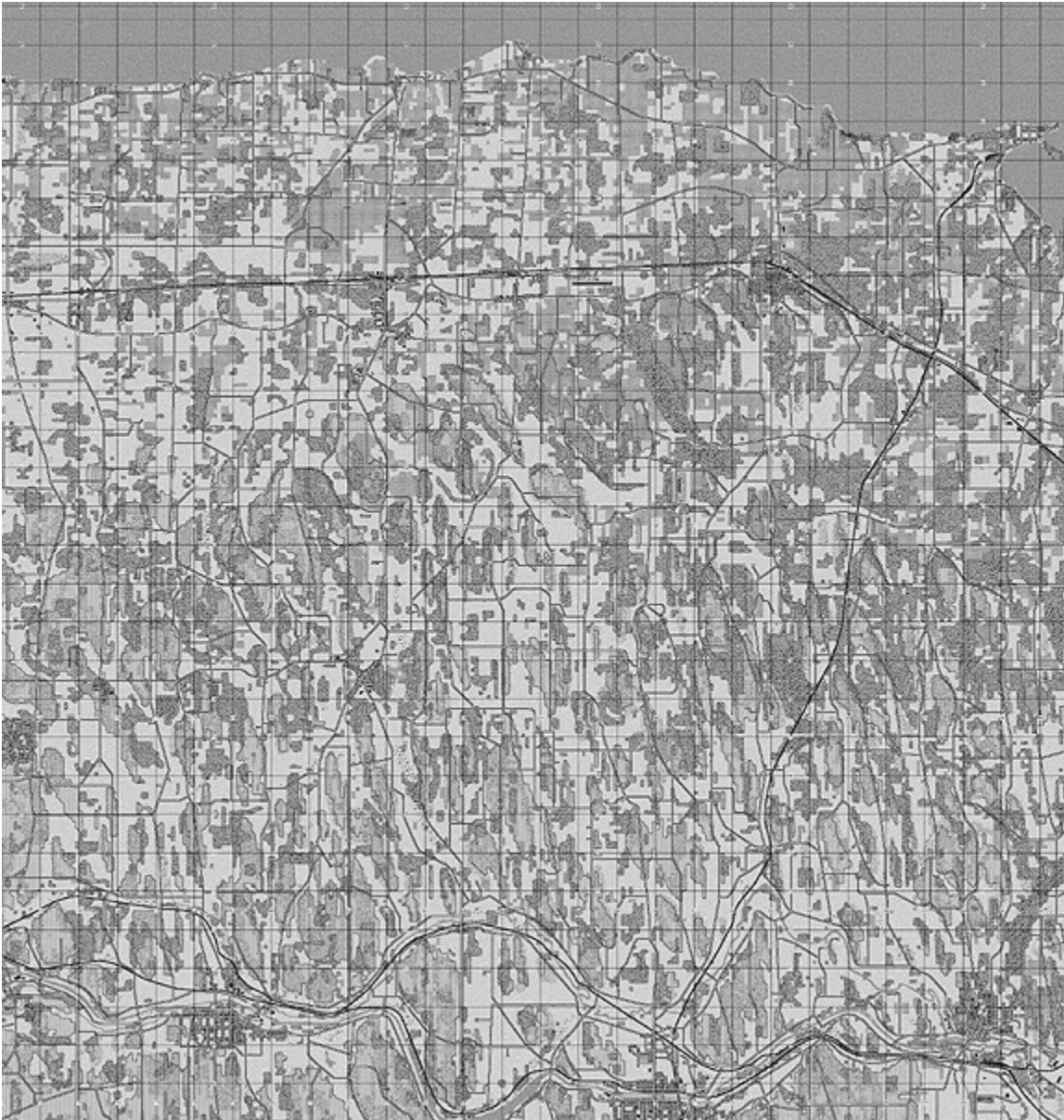
This map depicts Dansville, NY (pop. 6,000) with a nearby airport, both in a valley. Much of the rest of the map is higher elevation. Area is a mix of woods and roads, with fordable streams. The author has also provided alternate map images for Map567. Switch between the original view and alternate print map, topographic map and aerial photo versions of the map image by copying a map file. Instructions included in download. Size: 13x14.5 km. Author: Darius Kasinskas.





## Map570

This map depicts the Wayne County (approx. 380km north west of New York City) area of New York State, starting around 27km east of Rochester, NY. To the north is Lake Ontario (one of the Great Lakes). Bounding the map to the south is the Erie Canal, Ganaragua and other creeks. Orchards and drumlins are prevalent. Some areas are swampy. Size: 30 x 29 kms. Companion map 571 shows the western 15km of this map and an additional 7 km farther west. Map 572 shows the eastern 15km of this map and an additional 7 km farther east. Author: Darius Kasinskas.





## Map571

This map depicts the Wayne County (approx. 380km north west of New York City) area of New York State, starting around 20km east of Rochester, NY. To the north is Lake Ontario (one of the Great Lakes). Bounding the map to the south is the Erie Canal, Ganaragua and other creeks. Orchards and drumlins are prevalent. Some areas are swampy. Size: Approx. 22 x 29 kms. Companion map 570 shows the eastern 15km of this map and a farther 15 km to the east. Map 572 shows the adjacent 22km east of this map. Author: Darius Kasinskas.





## Map572

This map depicts the Wayne County (approx. 380km north west of New York City) area of New York State, starting around 42km east of Rochester, NY. To the north is Lake Ontario (one of the Great Lakes). Bounding the map to the south is the Erie Canal, Ganaragua and other creeks. Orchards and drumlins are prevalent. Some areas are swampy. Size: Approx. 22 x 29 kms. Companion map 570 shows the western 15km of this map and a farther 15 km to the west. Map 571 shows the adjacent 22km west of this map. Author: Darius Kasinskas.



### Map573

This 7x30km map depicts largely flat, open terrain. A principal road and railroad run from the west to a city in the east. Author: Darius Kasinskas.



### Map574

This map depicts complex terrain with many small hills and woods. Author: Darius Kasinskas.



### Map575

This map depicts a canal and river running east to west, with numerous woods, towns and hills. Author: Darius Kasinskas.



### Map576

This map depicts mostly flat terrain to the west, high terrain to the east. At the east end is a river and canal. There is a power plant on the shore to the north. Author: Darius Kasinskas.





### Map577

This map depicts hilly terrain to the west, with a canal and river. To the east terrain is lower but orchards are common. Author: Darius Kasinskas.



### Map578

This map depicts mostly flat terrain with many orchards to the west, with a mix of hills and woods to the east. In the east is a river and canal. Author: Darius Kasinskas.



### Map579

This map depicts a city in the west, adjacent to a canal and river. Woods are common in the center and east. Orchards prevail in the east along the shore. Author: Darius Kasinskas.



### Map580

This map depicts a shore and bay in the west, with hills to the east. There are many woods. A city is in the east, along a river and canal. Orchards prevail in the west along the shore. Author: Darius Kasinskas.



### Map581

This map depicts mostly flat terrain, with a river and canal in the west; open fields in the center; and woods, orchards and a bay in the east. Author: Darius Kasinskas.



### Map650 (Germany)

Low fidelity interpretation of an area in Germany from Hammelburg to Thulba.





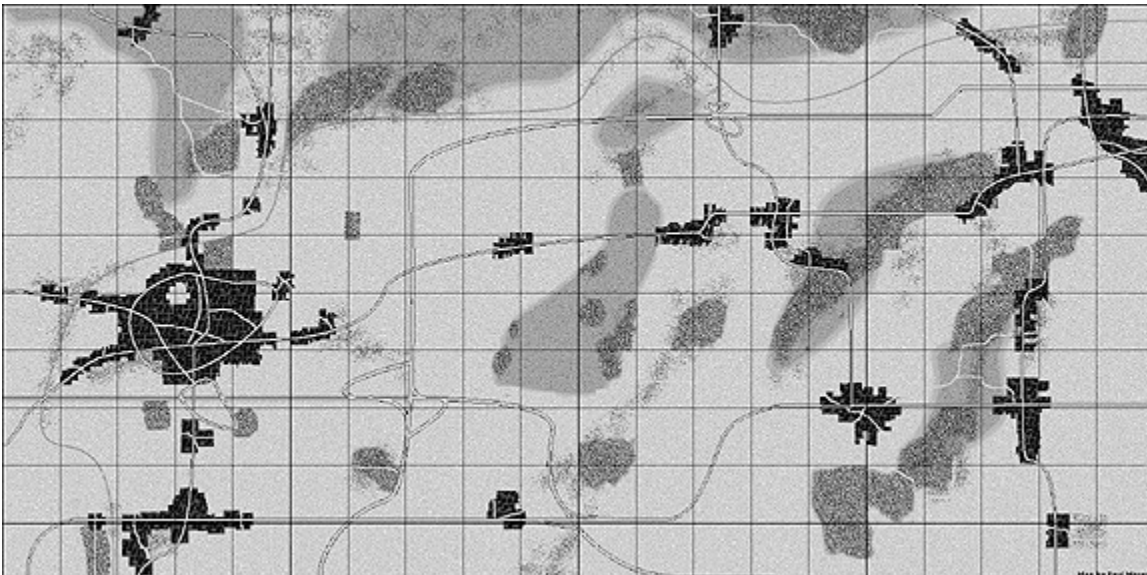
## Map780

Two major rivers dominate each end of the map with a central ridge and farm land in between. The western side of the map contains a large city complex where the eastern side is more rural. The map is well wooded in the west that continues to thin as you go east and picks back up once you cross the eastern river. (Size: 30 km. x 15 km. Author: Jeffrey Gilbert.



## Map861

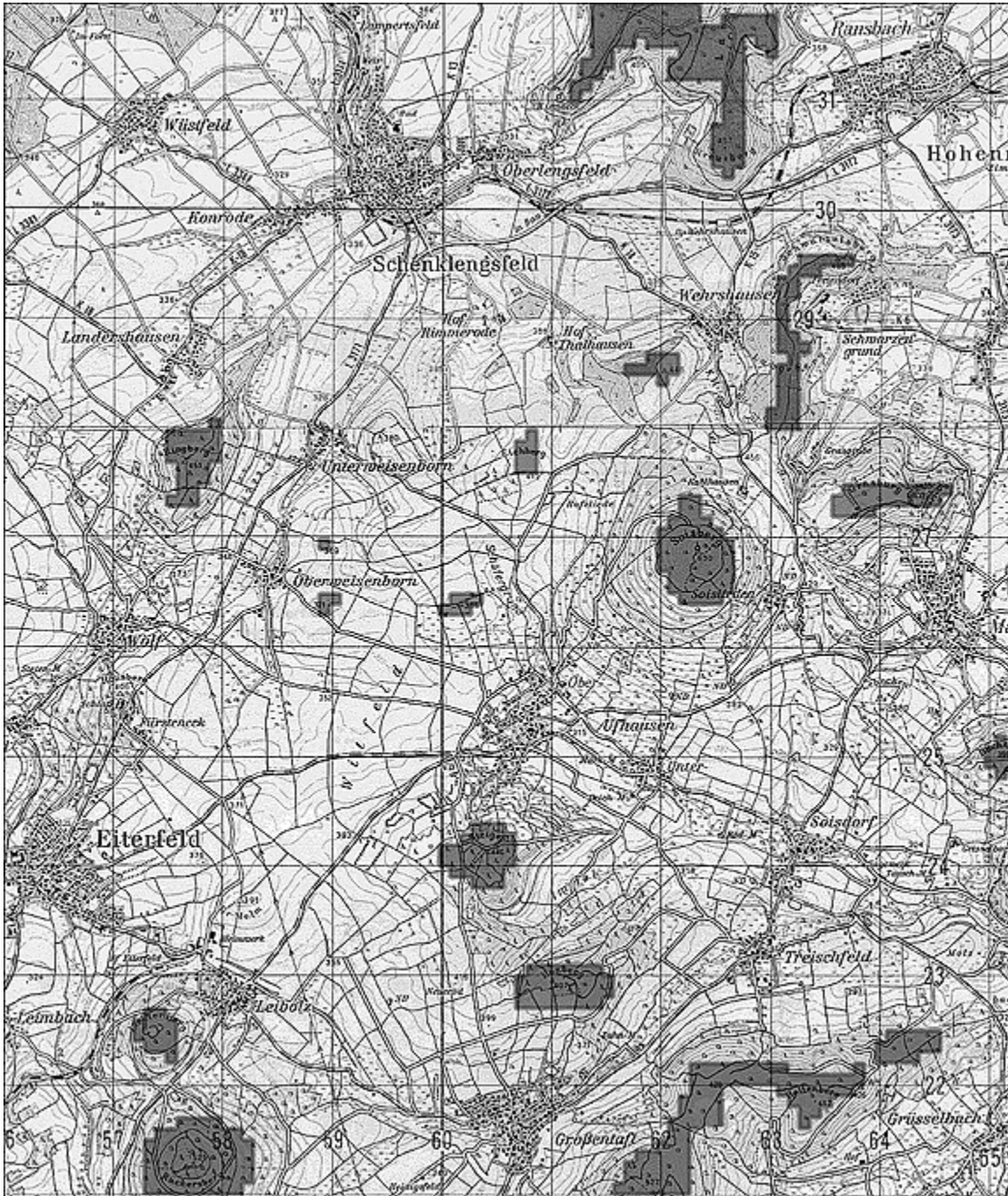
Wooded map with modern urban areas and expressways.





## Map900 (Germany)

Low fidelity map of an area in Germany including the towns of Eiterfeld, Schenkklengsfeld, and Ransbach. Grid 5621 to 6531. Topo map scan background. Originally coded by the Canadian Army.





## Map902 (Gagetown)

Low fidelity interpretation of the Gagetown Canadian Army training area. Grid 1052 to 1965. Topo map scan background. Originally coded by the Canadian Army.

